

2012 CATALOGUE



BALBONI
INOX

REAR COUNTER LINE



Balboni Inox

Leading manufacturer of stainless steel furniture for mass retail

The rear counters manufactured by Balboni Inox are made entirely of AISI 304 stainless steel and are designed for those who need to custom-build their workplace.

The space underneath the worktops (which can measure up to 3 m in length in a single unit and feature vats, trays, and containers), can be used to house drawers, neutral units, refrigerator units, etc. ...

The worktops can be built in two versions: 700 and 900 mm. Upon request, the 900 mm version can include cable holes in case the leads of small items of equipment located on the tops need to be concealed.

The wall units, which are also made of AISI 304 stainless steel, can be built in a wide variety of versions (open-fronted, cupboards, refrigerated, with shelves, with bars for hanging dressed meats, etc ...).



700 mm deep version

Pictures are provided for illustration purposes only and products may differ from those shown.



900 mm deep version

TABLE OF CONTENTS

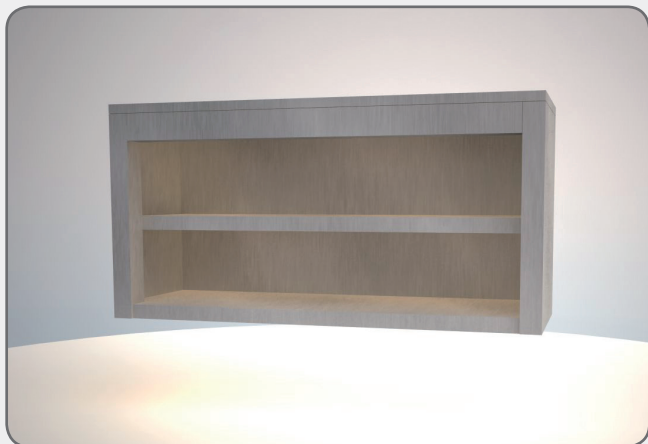
REAR COUNTER LINE

Components	p.	4
Tables	"	5
Washbasins and sinks	"	10
Units	"	12

Pictures are provided for illustration purposes only and products may differ from those shown.

Modular rear counters

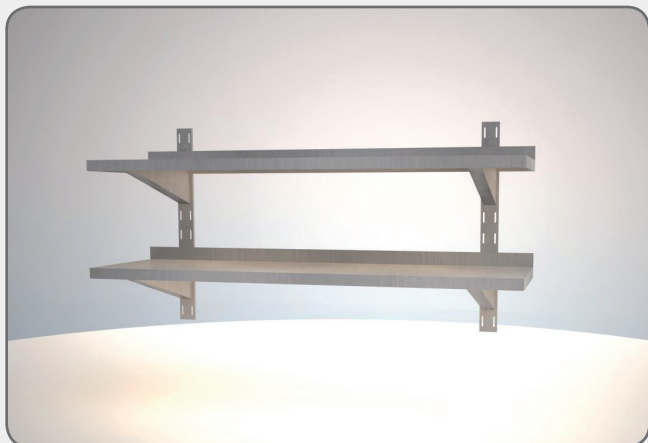
Components



Open, wall cupboard

- Made of AISI 304 stainless steel
- 1.0 mm thick metal sheet with Scotch Brite finish
- Internal features include height-adjustable middle shelf and rear panel

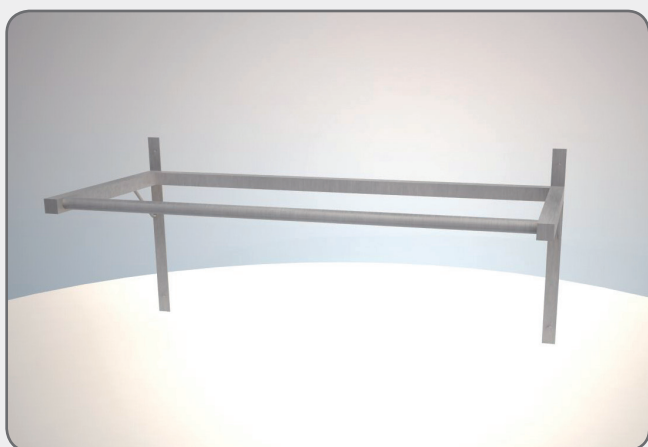
MODEL	DIMENSION
2500000010	1200x400x600 H



Wall-mounted shelves

- Made of AISI 304 stainless steel
- Solid shelf
- 40 mm rear riser
- Complete with support brackets and wall-mounted uprights
- 70 mm shelf adjustment spacing
- Available in versions with depth of 300 and 400 mm and length ranging from 1000 to 2000 (with intermediate sizes at 100 mm intervals)

MODEL	DIMENSION
2500000020	



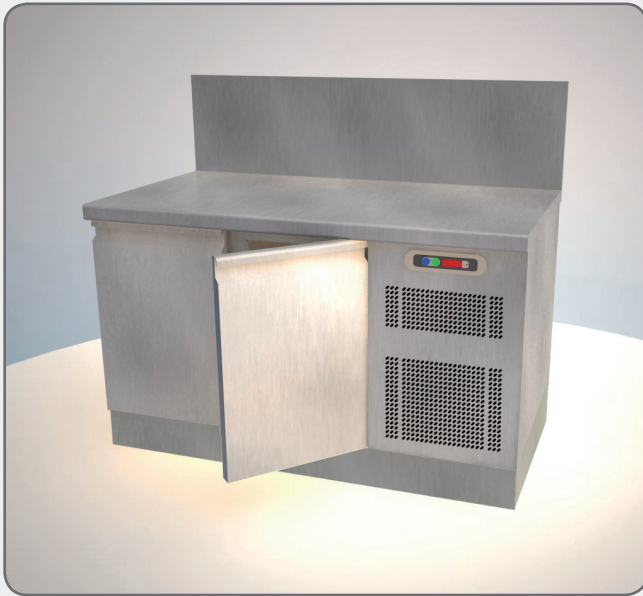
Charcuterie hanger

- Length as required
- Made of AISI 304 stainless steel and suitable for bracketing to wall
- Weld-assembled panelling and framework

MODEL	DIMENSION
2500000030	1200x400x600 H

Modular rear counters

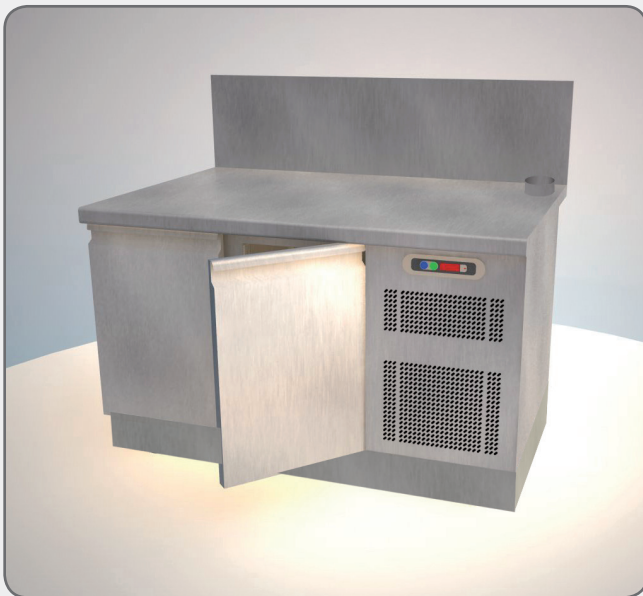
Refrigerated tables



700 mm version refrigerated table with two doors

- Made of AISI 304 stainless steel
- Single-body structure
- High-density, CFC-free polyurethane insulation
- Self-closing doors
- Built-in refrigeration unit
- Remote electronic thermostat control
- Automatic defrost
- Automatic condensate evaporation
- Fan version (NT or LT) or static version
- Mechanical compartment positionable on either RH or LH side of table
- All doors are reversible
- Stainless steel countertop with rounded front edge
- 350 mm rear riser
- Hinged instrument panel on mechanical compartment to facilitate servicing

MODEL	DIMENSION
2500000040 (TN)	1 300x700x850 H
2500000042 (BT)	1 300x700x850 H



900 mm version refrigerated table with two doors

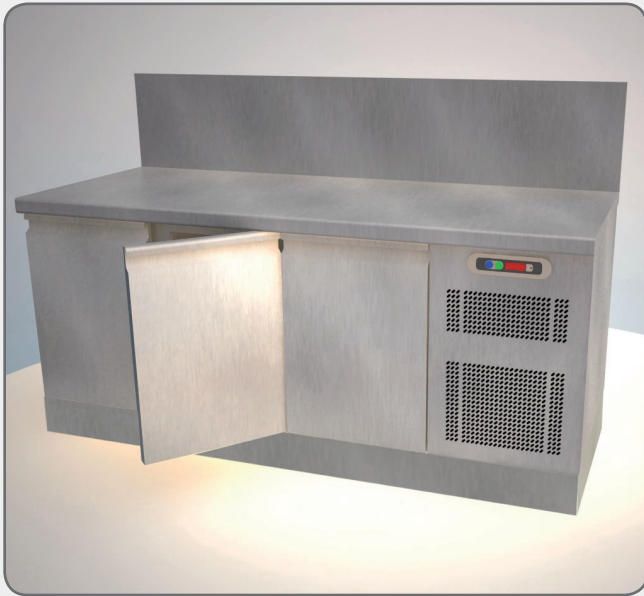
- Made of AISI 304 stainless steel
- Single-body structure
- High-density, CFC-free polyurethane insulation
- Self-closing doors
- Built-in refrigeration unit
- Remote electronic thermostat control
- Automatic defrost
- Automatic condensate evaporation
- Fan version (NT or LT) or static version
- Mechanical compartment positionable on either RH or LH side of table
- All doors are reversible
- Stainless steel countertop with rounded front edge
- 350 mm rear riser
- Hinged instrument panel on mechanical compartment to facilitate servicing

MODEL	DIMENSION
2500000050 (TN)	1 300x900x850 H
2500000052 (BT)	1 300x900x850 H

Pictures are provided for illustration purposes only and products may differ from those shown.

Modular rear counters

Refrigerated tables



700 mm version refrigerated table with three doors

- Made of AISI 304 stainless steel
- Single-body structure
- High-density, CFC-free polyurethane insulation
- Self-closing doors
- Built-in refrigeration unit
- Remote electronic thermostat control
- Automatic defrost
- Automatic condensate evaporation
- Fan version (NT or LT) or static version
- Mechanical compartment positionable on either RH or LH side of table
- All doors are reversible
- Stainless steel countertop with rounded front edge
- 350 mm rear riser
- Hinged instrument panel on mechanical compartment to facilitate servicing

MODEL	DIMENSION
2500000060 (TN)	1780x700x850 H
2500000062 (BT)	1780x700x850 H



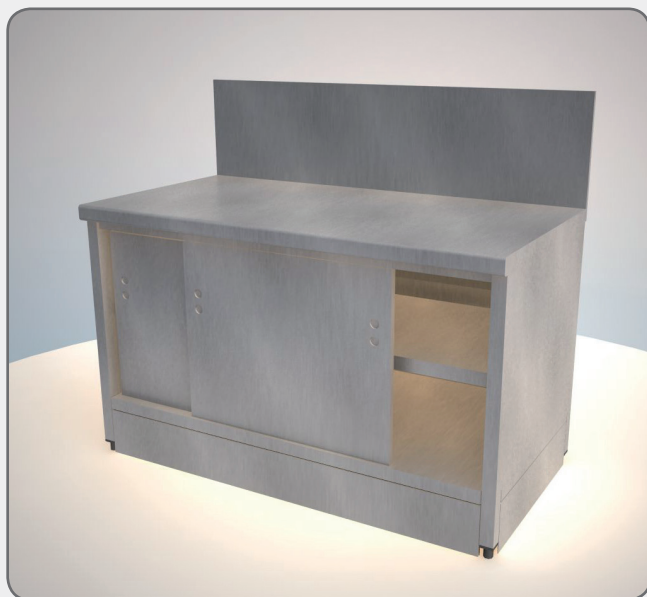
900 mm version refrigerated table with three doors

- Made of AISI 304 stainless steel
- Single-body structure
- High-density, CFC-free polyurethane insulation
- Self-closing doors
- Built-in refrigeration unit
- Remote electronic thermostat control
- Automatic defrost
- Automatic condensate evaporation
- Fan version (NT or LT) or static version
- Mechanical compartment positionable on either RH or LH side of table
- All doors are reversible
- Stainless steel countertop with rounded front edge
- 350 mm rear riser
- Hinged instrument panel on mechanical compartment to facilitate servicing

MODEL	DIMENSION
2500000070 (TN)	1780x900x850 H
2500000072 (BT)	1780x900x850 H

Modular rear counters

Neutral tables



700 table with cupboard base

- Stainless steel countertop with rounded edge
- 350 mm rear riser
- Cupboard base
- AISI 304 stainless steel sheet panelling with Scotch Brite finish (thickness: 0.8 mm)
- Fixed bottom shelf and height-adjustable middle shelf, both reinforced underneath with top-hat profiles
- Sliding doors made of honeycomb sandwich board running on bearing tracks
- 40x40 mm square leg with adjustable feet
- Weld-assembled panelling and framework

MODEL	DIMENSION
2500000080	1500x700x850 H



900 table with cupboard base

- Piano superiore inox con bordo a aquadro (Stainless steel countertop with rounded edge)
- 350 mm rear riser
- Cupboard base
- AISI 304 stainless steel sheet panelling with Scotch Brite finish (thickness: 0.8 mm)
- Fixed bottom shelf and height-adjustable middle shelf, both reinforced underneath with top-hat profiles
- Sliding doors made of honeycomb sandwich board running on bearing tracks
- 40x40 mm square leg with adjustable feet
- Weld-assembled panelling and framework

MODEL	DIMENSION
2500000090	1500x900x850 H

Pictures are provided for illustration purposes only and products may differ from those shown.

Modular rear counters

Neutral tables



700 mm version table with cupboard base and paper compartment

- Stainless steel countertop with rounded edge
- 350 mm rear riser
- Cupboard base
- AISI 304 stainless steel sheet panelling with Scotch Brite finish (thickness: 0.8 mm)
- Fixed bottom shelf reinforced underneath with top-hat profiles
- Undercounter st. compartment for paper (h = 200 mm)
- Sliding doors made of honeycomb sandwich board running on bearing tracks
- 40x40 mm square leg with adjustable feet
- Weld-assembled panelling and framework

MODEL	DIMENSION
2500000100	1500x700x850 H



900 mm version table with cupboard base and paper compartment

- Stainless steel countertop with rounded edge
- 350 mm rear riser
- Cupboard base
- AISI 304 stainless steel sheet panelling with Scotch Brite finish (thickness: 0.8 mm)
- Fixed bottom shelf reinforced underneath with top-hat profiles
- Cable trunking built into countertop
- Undercounter st. compartment for paper (h = 200 mm)
- Sliding doors made of honeycomb sandwich board running on bearing tracks
- 40x40 mm square leg with adjustable feet
- Weld-assembled panelling and framework

MODEL	DIMENSION
2500000110	1500x900x850 H

Modular rear counters

Neutral tables



T700 mm version table on cupboard base for meat slicers

- Stainless steel worktop with rounded edge
- 350 mm rear riser
- Open base with storage shelves and drop-down compartment
- 40x40 mm square leg with adjustable feet
- Weld-assembled panelling and framework

MODEL	DIMENSION
2500000200	1250x700x850H



900 mm version table on cupboard base for meat slicers

- Stainless steel worktop with rounded edge
- 350 mm rear riser
- Open base with storage shelves and drop-down compartment
- 40x40 mm square leg with adjustable feet
- Weld-assembled panelling and framework

MODEL	DIMENSION
2500000210	1250x900x850 H

Pictures are provided for illustration purposes only and products may differ from those shown.

Modular rear counters

Washbasins and sinks



700 mm round washbasin

- Made entirely of AISI 304 stainless steel
- Boxed, folded metal sheet panelling with thickness: 10/10
- Sliding doors on stainless steel guides with bearings
- Top with built-in moulded basin
- Rounded front edge
- 350 mm backsplash
- Bottom shelf
- 40x40 square leg
- Adjustable feet
- Satin Scotch Brite finish
- Equipped with plug hole and overflow

MODEL	DIMENSION
2500000120	700x700x850 H



900 mm round washbasin

- Made entirely of AISI 304 stainless steel
- Boxed, folded metal sheet panelling with thickness: 10/10
- Sliding doors on stainless steel guides with bearings
- Top with built-in moulded basin
- Rounded front edge
- 350 mm backsplash
- Bottom shelf
- 40x40 square leg
- Adjustable feet
- Satin Scotch Brite finish
- Equipped with plug hole and overflow

MODEL	DIMENSION
2500000130	700x900x850 H

Modular rear counters

Washbasins and sinks



700 mm rectangular sink

- Made entirely of AISI 304 stainless steel
- Boxed, folded metal sheet panelling with thickness: 10/10
- Sliding doors on stainless steel guides with bearings
- Top with welded sink and built-in drip guard
- Rounded front edge
- 350 mm backsplash
- Bottom shelf
- 40x40 square leg
- Adjustable feet
- Satin Scotch Brite finish
- Equipped with plug hole and overflow

MODEL	DIMENSION
2500000140	1000x700x850 H



900 mm rectangular sink

- Made entirely of AISI 304 stainless steel
- Boxed, folded metal sheet panelling with thickness: 10/10
- Sliding doors on stainless steel guides with bearings
- Top with welded sink and built-in drip guard
- Rounded front edge
- 350 mm backsplash
- Bottom shelf
- 40x40 square leg
- Adjustable feet
- Satin Scotch Brite finish
- Equipped with plug hole and overflow

MODEL	DIMENSION
2500000150	1000x900x850 H

Pictures are provided for illustration purposes only and products may differ from those shown.

Modular rear counters

Units



700 mm version drawer unit with three drawers

- Countertop with rounded edge
- 350 mm rear riser
- Three drawers mounted on telescopic rails made of galvanised steel, complete with drawer stop
- 40x40 mm square leg with adjustable feet
- Weld-assembled panelling and framework

MODEL	DIMENSION
2500000160	520x700x850 H



900 mm version drawer unit with three drawers

- Countertop with rounded edge
- 350 mm rear riser
- Three drawers mounted on telescopic rails made of galvanised steel, complete with drawer stop
- 40x40 mm square leg with adjustable feet
- Weld-assembled panelling and framework

MODEL	DIMENSION
2500000170	520x900x850 H



700 mm version unit with drop-down compartment

- Countertop with rounded edge
- 350 mm rear riser
- ø 180mm studded waste hole
- Cupboard base with drop-down compartment
- 40x40 mm square leg with adjustable feet
- Weld-assembled panelling and framework

MODEL	DIMENSION
2500000180	520x700x850 H



900 mm version unit with drop-down compartment

- Countertop with rounded edge
- 350 mm rear riser
- ø 180mm studded waste hole
- Cupboard base with drop-down compartment
- 40x40 mm square leg with adjustable feet
- Weld-assembled panelling and framework

MODEL	DIMENSION
2500000190	520x900x850 H

Modular rear counters



Pictures are provided for illustration purposes only and products may differ from those shown.



Via Della Resistenza, 8/4 - 41011 Campogalliano - MO - Italy

Phone. +39 059 527602 - Fax +39 059 527583

E-mail: balboni@balboni-inox.com

www.balboni-inox.com