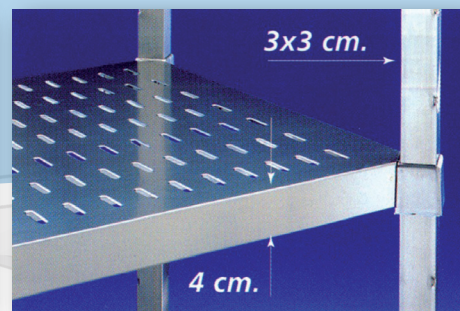


CATALOGO 2012



LINEA SCAFFALATURE



Balboni Inox

Leader nella produzione di scaffalature in acciaio inox

Nata alla fine degli anni '50 BALBONI opera da sempre nel settore delle costruzioni meccaniche.

Dalla fine degli anni '70 BALBONI INOX progetta e produce arredi ed attrezzature per i settori Grandi Impianti, Grandi Cucine e Grande Distribuzione Organizzata. In questo contesto si collocano le scaffalature completamente realizzate in acciaio inox aisi 304.

La struttura Aziendale flessibile ed altamente qualificata garantisce nel tempo la qualità dei prodotti.

Le scaffalature Balboni Inox sono la soluzione ideale per lo stoccaggio di derrate alimentari

all'interno di celle frigorifere a temperatura positiva e negativa.

La rapidità e la praticità di montaggio, la robustezza, la conformità alle normative di igiene e sicurezza, la modularità e la versatilità sono le caratteristiche che identificano la nostra scaffalatura. Svariate sono le applicazioni possibili che permettono di ottimizzare gli spazi all'interno di ogni ambiente.

L'utilizzo di materiali idonei al contatto con alimenti e la totale assenza di viti e bulloni, garantiscono il mantenimento dell'igiene e della pulizia come prescritto dalle normative europee HACCP.

Il sistema di incastro delle scaffalature Balboni Inox permette un'assemblaggio facile e veloce senza l'uso di alcuna attrezzatura. La stabilizzazione della struttura avviene automaticamente in funzione del carico, non sono quindi necessarie le crociere stabilizzatrici. Particolari sistemi di aggancio permettono la creazione di angoli senza l'utilizzo di piantoni aggiuntivi.

Le scaffalature Balboni Inox vengono prodotte in due linee principali per assolvere a tutte le esigenze:

- **INOX STANDARD:** realizzate con montante in tubolare 30x30 e ripiani forati o lisci spessore 40 mm (vedi tabelle portate a pag. 6/7).
- **INOX RINFORZATO:** realizzate con montante in tubolare 40x40 e ripiani forati o lisci spessore 50 mm (vedi tabelle portate a pag. 26/27).





Balboni Inox

L'economicità, la leggerezza e la robustezza delle scaffalature in alluminio

Le scaffalature in alluminio sono la soluzione ideale per lo stoccaggio di derrate alimentari all'interno di celle frigorifere a temperatura positiva e negativa.

La rapidità e la praticità di montaggio, la robustezza, la conformità alle normative di igiene e sicurezza, la modularità e la versatilità sono le caratteristiche che identificano la nostra scaffalatura. Svariate sono le applicazioni possibili che permettono di ottimizzare gli spazi all'interno di ogni ambiente.

Le scaffalature sono realizzate con struttura portante costruita con profilati in alluminio ad alta resistenza, estrusi con materie prime di prima fusione (non riciclate ed anodizzati 20 micron).

La plastica utilizzata per sia nella produzione di particolari di assemblaggio, che per la composizione dei ripiani formati da elementi asportabili (di colore grigio alluminio) è costituita da materiale ad alta resistenza stampato con materia prima di prima fusione, certificata atossica, inattaccabile dagli acidi di base, immune da insediamenti batterici, completamente smontabile e sanificabile secondo le norme.

Queste caratteristiche unite alla totale assenza di viti e bulloni, garantiscono il mantenimento dell'igiene e della pulizia come prescritto dalle normative europee HACCP.

Il sistema di incastro delle scaffalature in alluminio permette un'assemblaggio facile e veloce senza l'uso di alcuna attrezzatura. La stabilizzazione della struttura avviene automaticamente in funzione del carico, non



sono quindi necessarie le crociere stabilizzatrici. Particolari agganci permettono la creazione di angoli senza l'utilizzo di piantoni aggiuntivi.

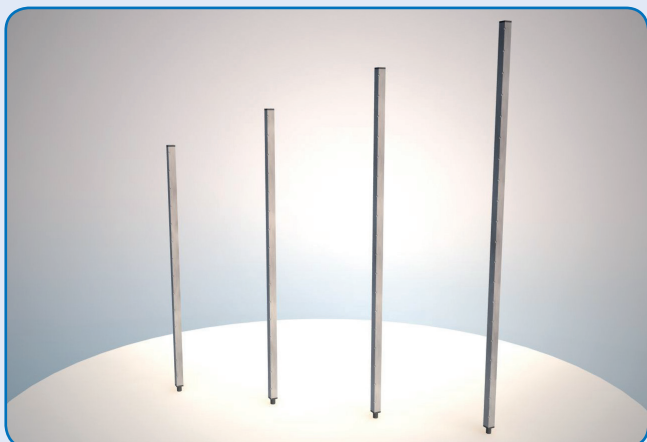
Le portate vengono indicate nella tabella a pagina 45/46.

INDICE

LINEA SCAFFALATURE

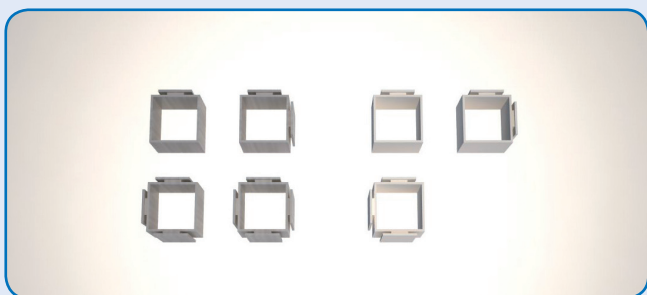
Serie INOX STANDARD	pag. 4
Serie INOX RINFORZATO	" 24
Serie ALLUMINIO	" 44

Elementi di costruzione



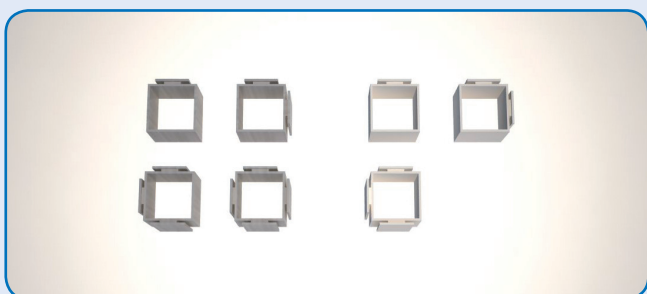
Montante in acciaio inox
con piede regolabile

MODELLO	DIMENSIONI
2300000010	1400 H
2300000020	1600 H
2300000030	1800 H
2300000040	2000 H
	A richiesta sono disponibili altezze da 300 mm a 2700 mm con intervallo di 100 mm



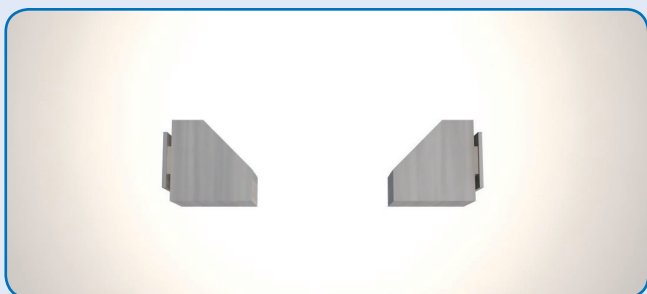
Aggancio inox

MODELLO	DIMENSIONI
2300000050	1 via
2300000060	2 vie
2300000070	3 vie
2300000080	4 vie



NEW Aggancio in polipropilene

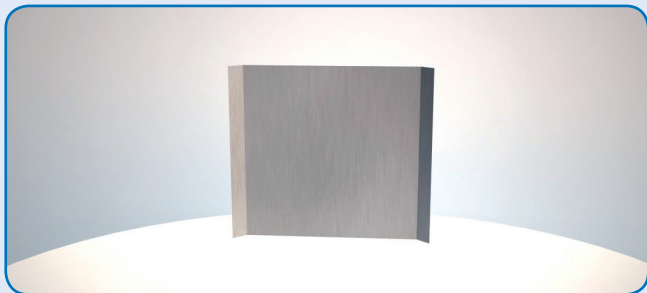
MODELLO	DIMENSIONI
2300000090	1 via
2300000100	2 vie
2300000110	3 vie



Aggancio inox ad angolo

MODELLO	DIMENSIONI
2300000120	DX
2300000130	SX

Elementi di costruzione



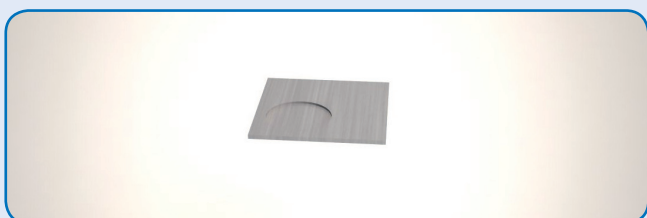
Lamiera in acciaio inox
di tamponamento posteriore o laterale

MODELLO	DIMENSIONI
2300000140	



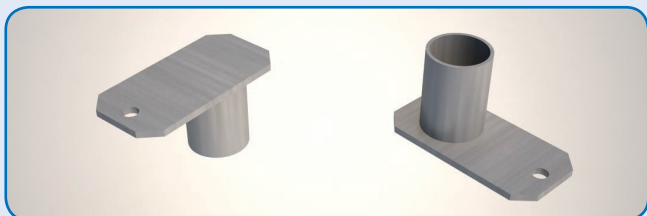
Ruote inox girevoli

MODELLO	DIMENSIONI
2300000150	s/freno ø 80
2300000160	s/freno ø 100
2300000170	c/freno ø 80
2300000180	c/freno ø 100



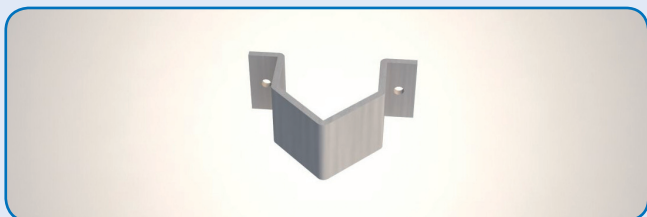
Piastra di distribuzione peso al suolo

MODELLO	DIMENSIONI
2300000190	



Fissaggio a soffitto e a pavimento

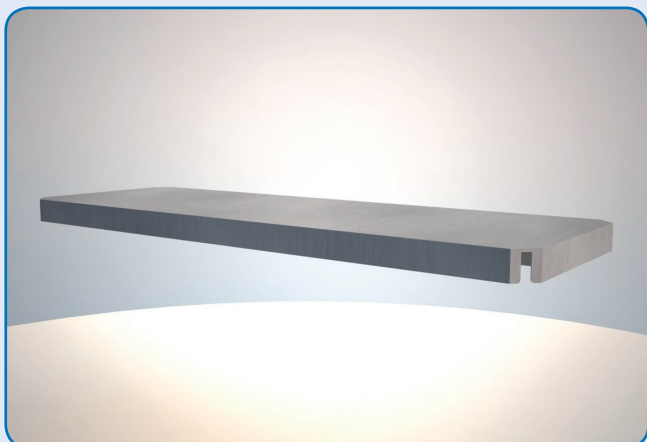
MODELLO	DIMENSIONI
2300000200	



Fissaggio a muro

MODELLO	DIMENSIONI
2300000210	

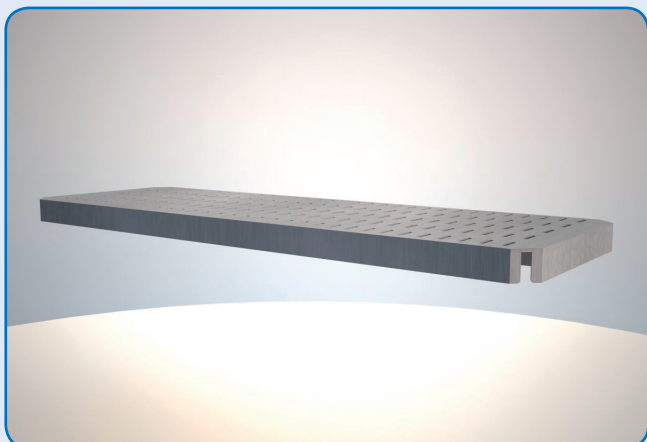
Ripiani



Ripiani lisci

MODELLO	DIMENSIONI	PORTATA Kg	
2300000220	400x600	200	
2300000230	400x700		
2300000240	400x800		
2300000250	400x900		
2300000260	400x1000		
2300000270	400x1100		
2300000280	400x1200		150
2300000290	400x1300		
2300000300	400x1400		
2300000310	400x1500		
2300000320	400x1600		
2300000330	400x1700		
2300000340	400x1800	100	
2300000350	400x1900		
2300000360	400x2000		
2300000370	500x600		200
2300000380	500x700		
2300000390	500x800		
2300000400	500x900		
2300000410	500x1000		
2300000420	500x1100		
2300000430	500x1200	150	
2300000440	500x1300		
2300000450	500x1400		
2300000460	500x1500		
2300000470	500x1600		
2300000480	500x1700		
2300000490	500x1800		100
2300000500	500x1900		
2300000510	500x2000		
2300000520	600x600	200	
2300000530	600x700		
2300000540	600x800		
2300000550	600x900		
2300000560	600x1000		
2300000570	600x1100		
2300000580	600x1200		150
2300000590	600x1300		
2300000600	600x1400		
2300000610	600x1500		
2300000620	600x1600		
2300000630	600x1700		
2300000640	600x1800	100	
2300000650	600x1900		
2300000660	600x2000		

Ripiani



Ripiani forati

MODELLO	DIMENSIONI	PORTATA Kg
2300000670	400x600	200
2300000680	400x700	
2300000690	400x800	
2300000700	400x900	
2300000710	400x1000	
2300000720	400x1100	
2300000730	400x1200	150
2300000740	400x1300	
2300000750	400x1400	
2300000760	400x1500	
2300000770	400x1600	100
2300000780	400x1700	
2300000790	400x1800	
2300000800	400x1900	
2300000810	400x2000	
2300000820	500x600	
2300000830	500x700	
2300000840	500x800	
2300000850	500x900	
2300000860	500x1000	
2300000870	500x1100	
2300000880	500x1200	150
2300000890	500x1300	
2300000900	500x1400	
2300000910	500x1500	
2300000920	500x1600	100
2300000930	500x1700	
2300000940	500x1800	
2300000950	500x1900	
2300000960	500x2000	
2300000970	600x600	
2300000980	600x700	
2300000990	600x800	
2300001000	600x900	
2300001010	600x1000	
2300001020	600x1100	
2300001030	600x1200	150
2300001040	600x1300	
2300001050	600x1400	
2300001060	600x1500	
2300001070	600x1600	100
2300001080	600x1700	
2300001090	600x1800	
2300001100	600x1900	
2300001110	600x2000	

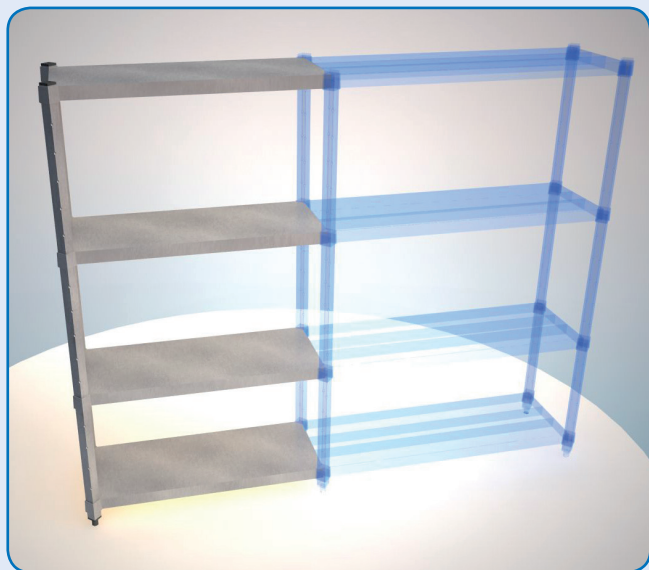
Elementi H. 1800



Elemento base liscio

MODELLO	DIMENSIONI
2300001120	400x600
2300001130	400x700
2300001140	400x800
2300001150	400x900
2300001160	400x1000
2300001170	400x1100
2300001180	400x1200
2300001190	400x1300
2300001200	400x1400
2300001210	400x1500
2300001220	400x1600
2300001230	400x1700
2300001240	400x1800
2300001250	400x1900
2300001260	400x2000
2300001270	500x600
2300001280	500x700
2300001290	500x800
2300001300	500x900
2300001310	500x1000
2300001320	500x1100
2300001330	500x1200
2300001340	500x1300
2300001350	500x1400
2300001360	500x1500
2300001370	500x1600
2300001380	500x1700
2300001390	500x1800
2300001400	500x1900
2300001410	500x2000
2300001420	600x600
2300001430	600x700
2300001440	600x800
2300001450	600x900
2300001460	600x1000
2300001470	600x1100
2300001480	600x1200
2300001490	600x1300
2300001500	600x1400
2300001510	600x1500
2300001520	600x1600
2300001530	600x1700
2300001540	600x1800
2300001550	600x1900
2300001560	600x2000

Elementi H. 1800



Elemento componibile diritto liscio

MODELLO	DIMENSIONI
2300001570	400x600
2300001580	400x700
2300001590	400x800
2300001600	400x900
2300001610	400x1000
2300001620	400x1100
2300001630	400x1200
2300001640	400x1300
2300001650	400x1400
2300001660	400x1500
2300001670	400x1600
2300001680	400x1700
2300001690	400x1800
2300001700	400x1900
2300001710	400x2000
2300001720	500x600
2300001730	500x700
2300001740	500x800
2300001750	500x900
2300001760	500x1000
2300001770	500x1100
2300001780	500x1200
2300001790	500x1300
2300001800	500x1400
2300001810	500x1500
2300001820	500x1600
2300001830	500x1700
2300001840	500x1800
2300001850	500x1900
2300001860	500x2000
2300001870	600x600
2300001880	600x700
2300001890	600x800
2300001900	600x900
2300001910	600x1000
2300001920	600x1100
2300001930	600x1200
2300001940	600x1300
2300001950	600x1400
2300001960	600x1500
2300001970	600x1600
2300001980	600x1700
2300001990	600x1800
2300002000	600x1900
2300002010	600x2000

Elementi H. 1800



Elemento comp. angolo dx liscio

MODELLO	DIMENSIONI
2300002020	400x600
2300002030	400x700
2300002040	400x800
2300002050	400x900
2300002060	400x1000
2300002070	400x1100
2300002080	400x1200
2300002090	400x1300
2300002100	400x1400
2300002110	400x1500
2300002120	400x1600
2300002130	400x1700
2300002140	400x1800
2300002150	400x1900
2300002160	400x2000
2300002170	500x600
2300002180	500x700
2300002190	500x800
2300002200	500x900
2300002210	500x1000
2300002220	500x1100
2300002230	500x1200
2300002240	500x1300
2300002250	500x1400
2300002260	500x1500
2300002270	500x1600
2300002280	500x1700
2300002290	500x1800
2300002300	500x1900
2300002310	500x2000
2300002320	600x600
2300002330	600x700
2300002340	600x800
2300002350	600x900
2300002360	600x1000
2300002370	600x1100
2300002380	600x1200
2300002390	600x1300
2300002400	600x1400
2300002410	600x1500
2300002420	600x1600
2300002430	600x1700
2300002440	600x1800
2300002450	600x1900
2300002460	600x2000

Elementi H. 1800



Elemento comp. angolo sx liscio

MODELLO	DIMENSIONI
2300002470	400x600
2300002480	400x700
2300002490	400x800
2300002500	400x900
2300002510	400x1000
2300002520	400x1100
2300002530	400x1200
2300002540	400x1300
2300002550	400x1400
2300002560	400x1500
2300002570	400x1600
2300002580	400x1700
2300002590	400x1800
2300002600	400x1900
2300002610	400x2000
2300002620	500x600
2300002630	500x700
2300002640	500x800
2300002650	500x900
2300002660	500x1000
2300002670	500x1100
2300002680	500x1200
2300002690	500x1300
2300002700	500x1400
2300002710	500x1500
2300002720	500x1600
2300002730	500x1700
2300002740	500x1800
2300002750	500x1900
2300002760	500x2000
2300002770	600x600
2300002780	600x700
2300002790	600x800
2300002800	600x900
2300002810	600x1000
2300002820	600x1100
2300002830	600x1200
2300002840	600x1300
2300002850	600x1400
2300002860	600x1500
2300002870	600x1600
2300002880	600x1700
2300002890	600x1800
2300002900	600x1900
2300002910	600x2000

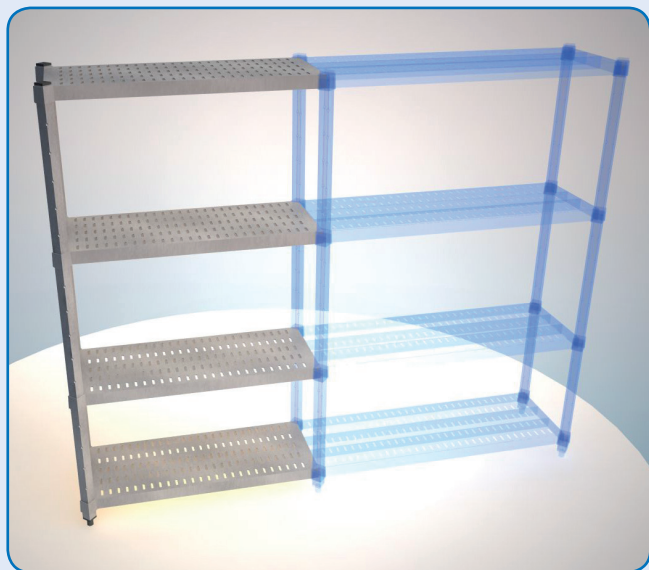
Elementi H. 1800



Elemento base forato

MODELLO	DIMENSIONI
2300002920	400x600
2300002930	400x700
2300002940	400x800
2300002950	400x900
2300002960	400x1000
2300002970	400x1100
2300002980	400x1200
2300002990	400x1300
2300003000	400x1400
2300003010	400x1500
2300003020	400x1600
2300003030	400x1700
2300003040	400x1800
2300003050	400x1900
2300003060	400x2000
2300003070	500x600
2300003080	500x700
2300003090	500x800
2300003100	500x900
2300003110	500x1000
2300003120	500x1100
2300003130	500x1200
2300003140	500x1300
2300003150	500x1400
2300003160	500x1500
2300003170	500x1600
2300003180	500x1700
2300003190	500x1800
2300003200	500x1900
2300003210	500x2000
2300003220	600x600
2300003230	600x700
2300003240	600x800
2300003250	600x900
2300003260	600x1000
2300003270	600x1100
2300003280	600x1200
2300003290	600x1300
2300003300	600x1400
2300003310	600x1500
2300003320	600x1600
2300003330	600x1700
2300003340	600x1800
2300003350	600x1900
2300003360	600x2000

Elementi H. 1800



Elemento componibile diritto forato

MODELLO	DIMENSIONI
2300003370	400x600
2300003380	400x700
2300003390	400x800
2300003400	400x900
2300003410	400x1000
2300003420	400x1100
2300003430	400x1200
2300003440	400x1300
2300003450	400x1400
2300003460	400x1500
2300003470	400x1600
2300003480	400x1700
2300003490	400x1800
2300003500	400x1900
2300003510	400x2000
2300003520	500x600
2300003530	500x700
2300003540	500x800
2300003550	500x900
2300003560	500x1000
2300003570	500x1100
2300003580	500x1200
2300003590	500x1300
2300003600	500x1400
2300003610	500x1500
2300003620	500x1600
2300003630	500x1700
2300003640	500x1800
2300003650	500x1900
2300003660	500x2000
2300003670	600x600
2300003680	600x700
2300003690	600x800
2300003700	600x900
2300003710	600x1000
2300003720	600x1100
2300003730	600x1200
2300003740	600x1300
2300003750	600x1400
2300003760	600x1500
2300003770	600x1600
2300003780	600x1700
2300003790	600x1800
2300003800	600x1900
2300003810	600x2000

Elementi H. 1800



Elemento comp. angolo dx forato

MODELLO	DIMENSIONI
2300003820	400x600
2300003830	400x700
2300003840	400x800
2300003850	400x900
2300003860	400x1000
2300003870	400x1100
2300003880	400x1200
2300003890	400x1300
2300003900	400x1400
2300003910	400x1500
2300003920	400x1600
2300003930	400x1700
2300003940	400x1800
2300003950	400x1900
2300003960	400x2000
2300003970	500x600
2300003980	500x700
2300003990	500x800
2300004000	500x900
2300004010	500x1000
2300004020	500x1100
2300004030	500x1200
2300004040	500x1300
2300004050	500x1400
2300004060	500x1500
2300004070	500x1600
2300004080	500x1700
2300004090	500x1800
2300004000	500x1900
2300004110	500x2000
2300004120	600x600
2300004130	600x700
2300004140	600x800
2300004150	600x900
2300004160	600x1000
2300004170	600x1100
2300004180	600x1200
2300004190	600x1300
2300004100	600x1400
2300004210	600x1500
2300004220	600x1600
2300004230	600x1700
2300004240	600x1800
2300004250	600x1900
2300004260	600x2000

Elementi H. 1800



Elemento comp. angolo sx forato

MODELLO	DIMENSIONI
2300004270	400x600
2300004280	400x700
2300004290	400x800
2300004300	400x900
2300004310	400x1000
2300004320	400x1100
2300004330	400x1200
2300004340	400x1300
2300004350	400x1400
2300004360	400x1500
2300004370	400x1600
2300004380	400x1700
2300004390	400x1800
2300004400	400x1900
2300004410	400x2000
2300004420	500x600
2300004430	500x700
2300004440	500x800
2300004450	500x900
2300004460	500x1000
2300004470	500x1100
2300004480	500x1200
2300004490	500x1300
2300004500	500x1400
2300004510	500x1500
2300004520	500x1600
2300004530	500x1700
2300004540	500x1800
2300004550	500x1900
2300004560	500x2000
2300004570	600x600
2300004580	600x700
2300004590	600x800
2300004600	600x900
2300004610	600x1000
2300004620	600x1100
2300004630	600x1200
2300004640	600x1300
2300004650	600x1400
2300004660	600x1500
2300004670	600x1600
2300004680	600x1700
2300004690	600x1800
2300004700	600x1900
2300004710	600x2000

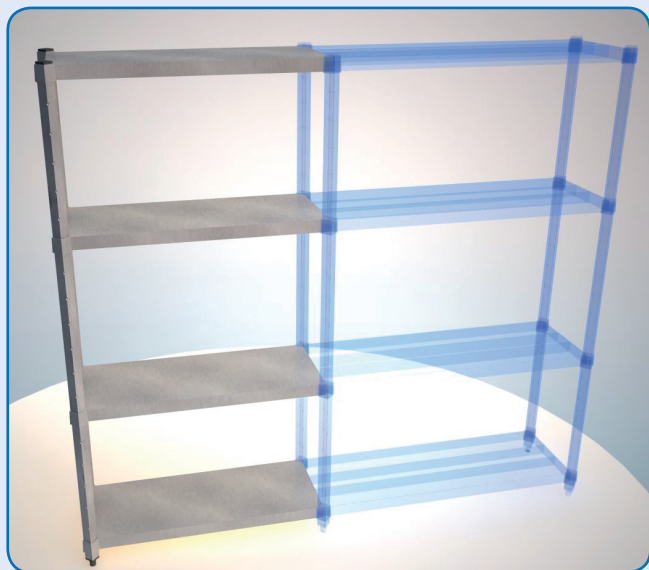
Elementi H. 2000



Elemento base liscio

MODELLO	DIMENSIONI
2300004720	400x600
2300004730	400x700
2300004740	400x800
2300004750	400x900
2300004760	400x1000
2300004780	400x1100
2300004790	400x1200
2300004800	400x1300
2300004810	400x1400
2300004820	400x1500
2300004830	400x1600
2300004840	400x1700
2300004850	400x1800
2300004860	400x1900
2300004870	400x2000
2300004880	500x600
2300004890	500x700
2300004900	500x800
2300004910	500x900
2300004920	500x1000
2300004930	500x1100
2300004940	500x1200
2300004950	500x1300
2300004960	500x1400
2300004970	500x1500
2300004980	500x1600
2300004990	500x1700
2300005000	500x1800
2300005010	500x1900
2300005020	500x2000
2300005030	600x600
2300005040	600x700
2300005050	600x800
2300005060	600x900
2300005070	600x1000
2300005080	600x1100
2300005090	600x1200
2300005100	600x1300
2300005110	600x1400
2300005120	600x1500
2300005130	600x1600
2300005140	600x1700
2300005150	600x1800
2300005160	600x1900
2300005170	600x2000

Elementi H. 2000



Elemento componibile diritto liscio

MODELLO	DIMENSIONI
2300005180	400x600
2300005190	400x700
2300005200	400x800
2300005210	400x900
2300005220	400x1000
2300005230	400x1100
2300005240	400x1200
2300005250	400x1300
2300005260	400x1400
2300005270	400x1500
2300005280	400x1600
2300005290	400x1700
2300005300	400x1800
2300005310	400x1900
2300005320	400x2000
2300005330	500x600
2300005340	500x700
2300005350	500x800
2300005360	500x900
2300005370	500x1000
2300005380	500x1100
2300005390	500x1200
2300005400	500x1300
2300005410	500x1400
2300005420	500x1500
2300005430	500x1600
2300005440	500x1700
2300005450	500x1800
2300005460	500x1900
2300005470	500x2000
2300005480	600x600
2300005490	600x700
2300005500	600x800
2300005510	600x900
2300005520	600x1000
2300005530	600x1100
2300005540	600x1200
2300005550	600x1300
2300005560	600x1400
2300005570	600x1500
2300005580	600x1600
2300005590	600x1700
2300005600	600x1800
2300005610	600x1900
2300005620	600x2000

Elementi H. 2000



Elemento comp. angolo dx liscio

MODELLO	DIMENSIONI
2300005630	400x600
2300005640	400x700
2300005650	400x800
2300005660	400x900
2300005670	400x1000
2300005680	400x1100
2300005690	400x1200
2300005700	400x1300
2300005710	400x1400
2300005720	400x1500
2300005730	400x1600
2300005740	400x1700
2300005750	400x1800
2300005760	400x1900
2300005770	400x2000
2300005780	500x600
2300005790	500x700
2300005800	500x800
2300005810	500x900
2300005820	500x1000
2300005830	500x1100
2300005840	500x1200
2300005850	500x1300
2300005860	500x1400
2300005870	500x1500
2300005880	500x1600
2300005890	500x1700
2300005900	500x1800
2300005910	500x1900
2300005920	500x2000
2300005930	600x600
2300005940	600x700
2300005950	600x800
2300005960	600x900
2300005970	600x1000
2300005980	600x1100
2300005990	600x1200
2300006000	600x1300
2300006010	600x1400
2300006020	600x1500
2300006030	600x1600
2300006040	600x1700
2300006050	600x1800
2300006060	600x1900
2300006070	600x2000

Elementi H. 2000



Elemento comp. angolo sx liscio

MODELLO	DIMENSIONI
2300006080	400x600
2300006090	400x700
2300006100	400x800
2300006110	400x900
2300006120	400x1000
2300006130	400x1100
2300006140	400x1200
2300006150	400x1300
2300006160	400x1400
2300006170	400x1500
2300006180	400x1600
2300006190	400x1700
2300006200	400x1800
2300006210	400x1900
2300006220	400x2000
2300006230	500x600
2300006240	500x700
2300006250	500x800
2300006260	500x900
2300006270	500x1000
2300006280	500x1100
2300006290	500x1200
2300006300	500x1300
2300006310	500x1400
2300006320	500x1500
2300006330	500x1600
2300006340	500x1700
2300006350	500x1800
2300006360	500x1900
2300006370	500x2000
2300006380	600x600
2300006390	600x700
2300006400	600x800
2300006410	600x900
2300006420	600x1000
2300006430	600x1100
2300006440	600x1200
2300006450	600x1300
2300006460	600x1400
2300006470	600x1500
2300006480	600x1600
2300006490	600x1700
2300006500	600x1800
2300006510	600x1900
2300006520	600x2000

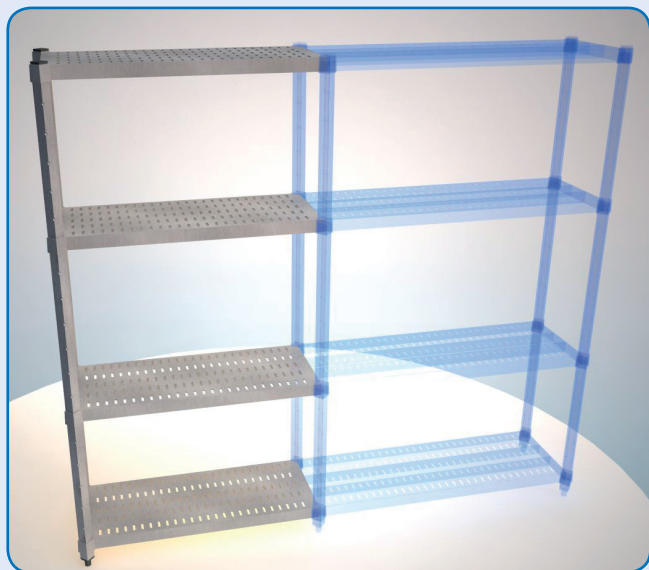
Elementi H. 2000



Elemento base forato

MODELLO	DIMENSIONI
2300006530	400x600
2300006540	400x700
2300006550	400x800
2300006560	400x900
2300006570	400x1000
2300006580	400x1100
2300006590	400x1200
2300006600	400x1300
2300006610	400x1400
2300006620	400x1500
2300006630	400x1600
2300006640	400x1700
2300006650	400x1800
2300006660	400x1900
2300006670	400x2000
2300006680	500x600
2300006690	500x700
2300006700	500x800
2300006710	500x900
2300006720	500x1000
2300006730	500x1100
2300006740	500x1200
2300006750	500x1300
2300006760	500x1400
2300006770	500x1500
2300006780	500x1600
2300006790	500x1700
2300006800	500x1800
2300006810	500x1900
2300006820	500x2000
2300006830	600x600
2300006840	600x700
2300006850	600x800
2300006860	600x900
2300006870	600x1000
2300006880	600x1100
2300006890	600x1200
2300006900	600x1300
2300006910	600x1400
2300006920	600x1500
2300006930	600x1600
2300006940	600x1700
2300006950	600x1800
2300006960	600x1900
2300006970	600x2000

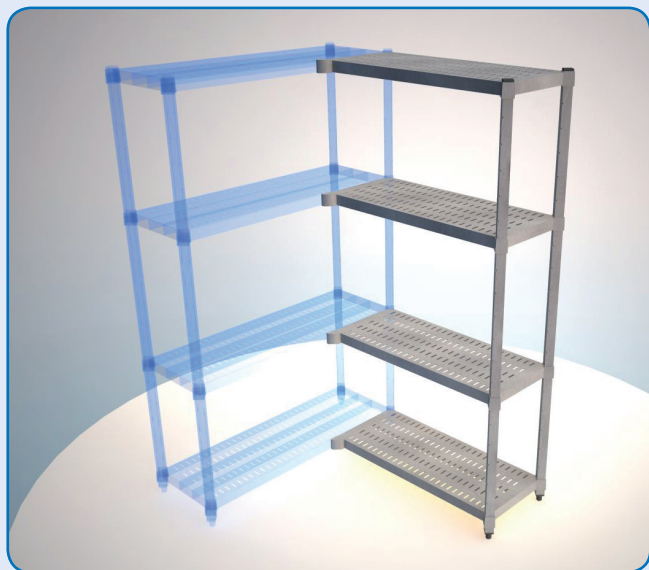
Elementi H. 2000



Elemento componibile diritto forato

MODELLO	DIMENSIONI
2300006980	400x600
2300006990	400x700
2300007000	400x800
2300007010	400x900
2300007020	400x1000
2300007030	400x1100
2300007040	400x1200
2300007050	400x1300
2300007060	400x1400
2300007070	400x1500
2300007080	400x1600
2300007090	400x1700
2300007100	400x1800
2300007110	400x1900
2300007120	400x2000
2300007130	500x600
2300007140	500x700
2300007150	500x800
2300007160	500x900
2300007170	500x1000
2300007180	500x1100
2300007190	500x1200
2300007200	500x1300
2300007210	500x1400
2300007220	500x1500
2300007230	500x1600
2300007240	500x1700
2300007250	500x1800
2300007260	500x1900
2300007270	500x2000
2300007280	600x600
2300007290	600x700
2300007300	600x800
2300007310	600x900
2300007320	600x1000
2300007330	600x1100
2300007340	600x1200
2300007350	600x1300
2300007360	600x1400
2300007370	600x1500
2300007380	600x1600
2300007390	600x1700
2300007400	600x1800
2300007410	600x1900
2300007420	600x2000

Elementi H. 2000



Elemento comp. angolo dx forato

MODELLO	DIMENSIONI
2300007430	400x600
2300007440	400x700
2300007450	400x800
2300007460	400x900
2300007470	400x1000
2300007480	400x1100
2300007490	400x1200
2300007500	400x1300
2300007510	400x1400
2300007520	400x1500
2300007530	400x1600
2300007540	400x1700
2300007550	400x1800
2300007560	400x1900
2300007570	400x2000
2300007580	500x600
2300007590	500x700
2300007600	500x800
2300007610	500x900
2300007620	500x1000
2300007630	500x1100
2300007640	500x1200
2300007650	500x1300
2300007660	500x1400
2300007670	500x1500
2300007680	500x1600
2300007690	500x1700
2300007700	500x1800
2300007710	500x1900
2300007720	500x2000
2300007730	600x600
2300007740	600x700
2300007750	600x800
2300007760	600x900
2300007770	600x1000
2300007780	600x1100
2300007790	600x1200
2300007800	600x1300
2300007810	600x1400
2300007820	600x1500
2300007830	600x1600
2300007840	600x1700
2300007850	600x1800
2300007860	600x1900
2300007870	600x2000

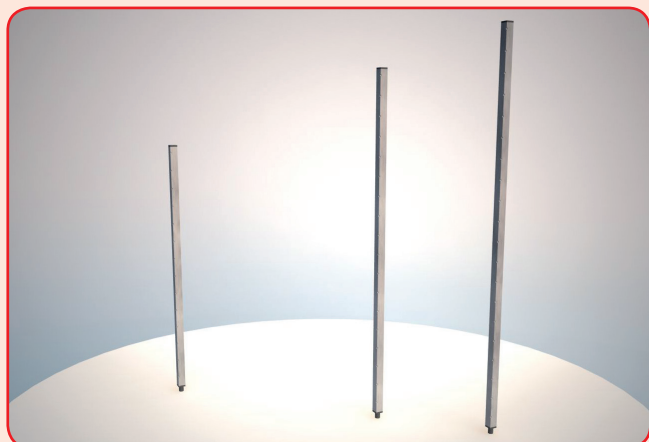
Elementi H. 2000



Elemento comp. angolo sx forato

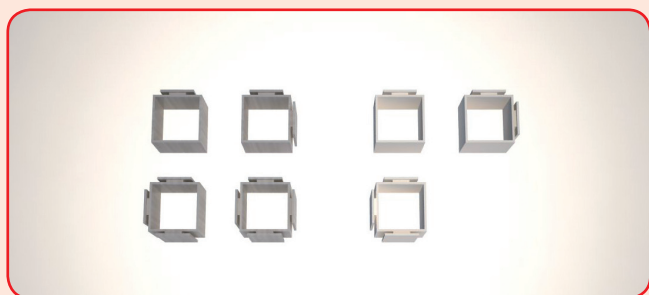
MODELLO	DIMENSIONI
2300007880	400x600
2300007890	400x700
2300007900	400x800
2300007910	400x900
2300007920	400x1000
2300007930	400x1100
2300007940	400x1200
2300007950	400x1300
2300007960	400x1400
2300007970	400x1500
2300007980	400x1600
2300007990	400x1700
2300008000	400x1800
2300008010	400x1900
2300008020	400x2000
2300008030	500x600
2300008040	500x700
2300008050	500x800
2300008060	500x900
2300008070	500x1000
2300008080	500x1100
2300008090	500x1200
2300008100	500x1300
2300008110	500x1400
2300008120	500x1500
2300008130	500x1600
2300008140	500x1700
2300008150	500x1800
2300008160	500x1900
2300008170	500x2000
2300008180	600x600
2300008190	600x700
2300008200	600x800
2300008210	600x900
2300008220	600x1000
2300008230	600x1100
2300008240	600x1200
2300008250	600x1300
2300008260	600x1400
2300008270	600x1500
2300008280	600x1600
2300008290	600x1700
2300008300	600x1800
2300008310	600x1900
2300008320	600x2000

Elementi di costruzione



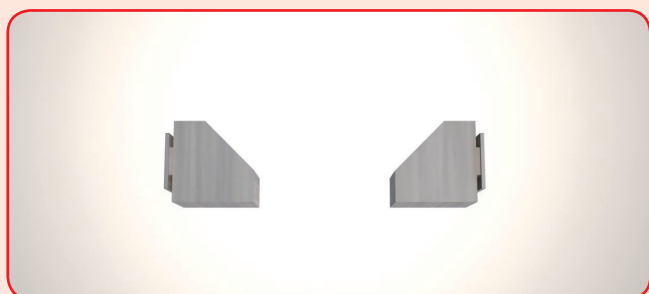
Montante in acciaio inox
con piede regolabile

MODELLO	DIMENSIONI
2300008330	1400 H
2300008340	1800 H
2300008350	2000 H
	A richiesta sono disponibili altezze da 300 mm a 2700 mm con intervallo di 100 mm



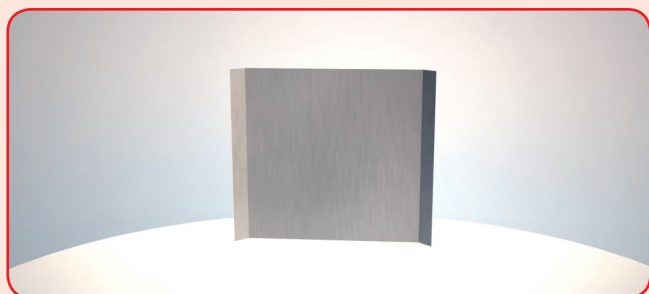
Aggancio inox

MODELLO	DIMENSIONI
2300008360	1 via
2300008370	2 vie
2300008380	3 vie
2300008390	4 vie



Aggancio inox ad angolo

MODELLO	DIMENSIONI
2300008400	DX
2300008410	SX



Lamiera in acciaio inox
di tamponamento posteriore o laterale

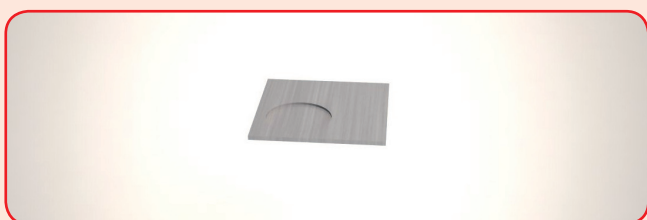
MODELLO	DIMENSIONI
2300008420	

Elementi di costruzione



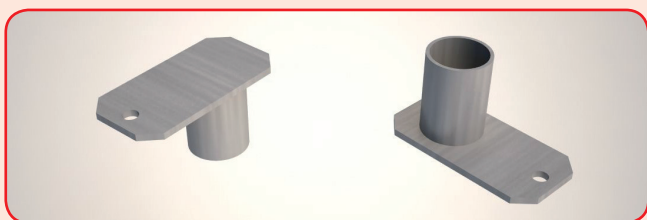
Ruote inox girevoli ø 100

MODELLO	DIMENSIONI
2300008430	s/freno
2300008440	c/freno



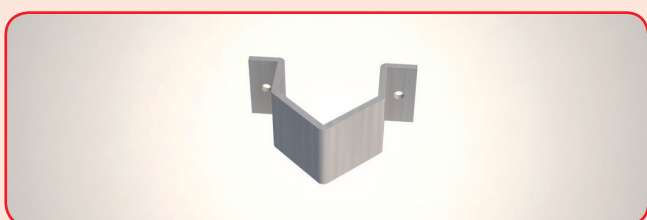
Piastra di distribuzione peso al suolo

MODELLO	DIMENSIONI
2300008450	



Fissaggio a soffitto e a pavimento

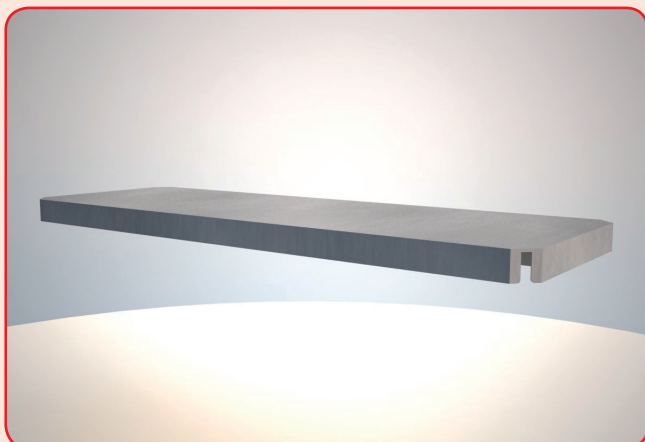
MODELLO	DIMENSIONI
2300008460	



Fissaggio a muro

MODELLO	DIMENSIONI
2300008470	

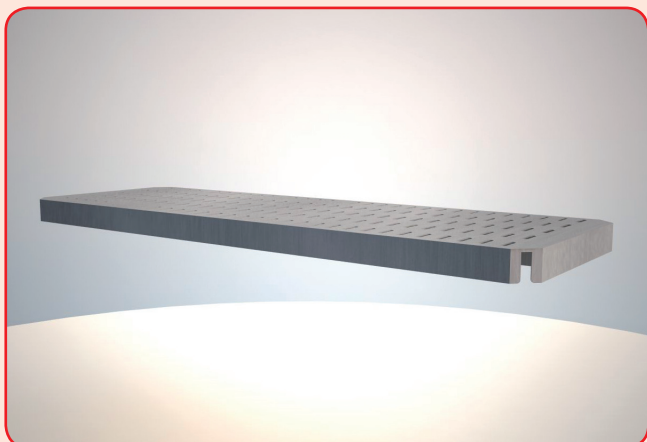
Ripiani



Ripiani lisci

MODELLO	DIMENSIONI	PORTATA Kg
2300008480	400x600	350
2300008490	400x700	
2300008500	400x800	
2300008510	400x900	
2300008520	400x1000	
2300008530	400x1100	300
2300008540	400x1200	
2300008550	400x1300	
2300008560	400x1400	
2300008570	400x1500	
2300008580	400x1600	200
2300008590	400x1700	
2300008600	400x1800	
2300008610	400x1900	
2300008620	400x2000	
2300008630	500x600	350
2300008640	500x700	
2300008650	500x800	
2300008660	500x900	
2300008670	500x1000	
2300008680	500x1100	300
2300008690	500x1200	
2300008700	500x1300	
2300008710	500x1400	
2300008720	500x1500	
2300008730	500x1600	200
2300008740	500x1700	
2300008750	500x1800	
2300008760	500x1900	
2300008770	500x2000	
2300008780	600x600	350
2300008790	600x700	
2300008800	600x800	
2300008900	600x900	
2300008910	600x1000	
2300008920	600x1100	300
2300008930	600x1200	
2300008940	600x1300	
2300008950	600x1400	
2300008960	600x1500	
2300008970	600x1600	200
2300008980	600x1700	
2300008990	600x1800	
2300009000	600x1900	
2300009010	600x2000	

Ripiani



Ripiani forati

MODELLO	DIMENSIONI	PORTATA Kg
2300009020	400x600	350
2300009030	400x700	
2300009040	400x800	300
2300009050	400x900	
2300009060	400x1000	300
2300009070	400x1100	
2300009080	400x1200	200
2300009090	400x1300	
2300009100	400x1400	200
2300009110	400x1500	
2300009120	400x1600	200
2300009130	400x1700	
2300009140	400x1800	200
2300009150	400x1900	
2300009160	400x2000	200
2300009170	500x600	
2300009180	500x700	350
2300009190	500x800	
2300009200	500x900	300
2300009210	500x1000	
2300009220	500x1100	300
2300009230	500x1200	
2300009240	500x1300	200
2300009250	500x1400	
2300009260	500x1500	200
2300009270	500x1600	
2300009280	500x1700	200
2300009290	500x1800	
2300009300	500x1900	200
2300009310	500x2000	
2300009320	600x600	350
2300009330	600x700	
2300009340	600x800	300
2300009350	600x900	
2300009360	600x1000	300
2300009370	600x1100	
2300009380	600x1200	200
2300009390	600x1300	
2300009400	600x1400	200
2300009410	600x1500	
2300009420	600x1600	200
2300009430	600x1700	
2300009440	600x1800	200
2300009450	600x1900	
2300009460	600x2000	200

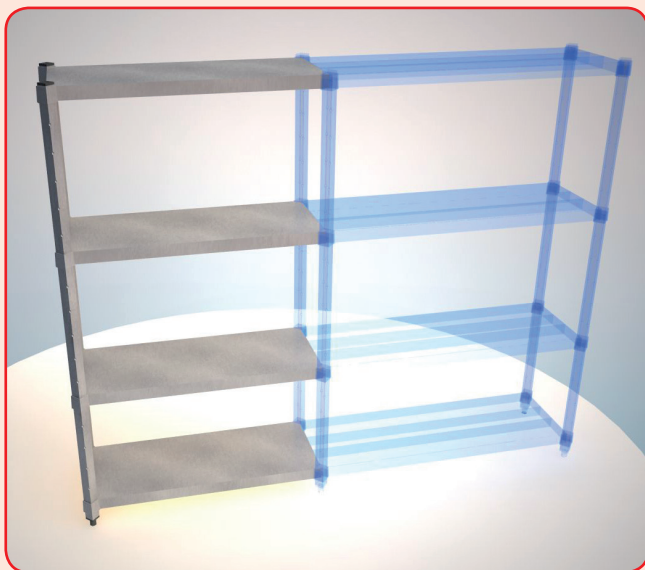
Elementi H. 1800



Elemento base liscio

MODELLO	DIMENSIONI
2300009470	400x600
2300009480	400x700
2300009490	400x800
2300009500	400x900
2300009510	400x1000
2300009520	400x1100
2300009530	400x1200
2300009540	400x1300
2300009550	400x1400
2300009560	400x1500
2300009570	400x1600
2300009580	400x1700
2300009590	400x1800
2300009600	400x1900
2300009610	400x2000
2300009620	500x600
2300009630	500x700
2300009640	500x800
2300009650	500x900
2300009660	500x1000
2300009670	500x1100
2300009680	500x1200
2300009690	500x1300
2300009700	500x1400
2300009710	500x1500
2300009720	500x1600
2300009730	500x1700
2300009740	500x1800
2300009750	500x1900
2300009760	500x2000
2300009770	600x600
2300009780	600x700
2300009790	600x800
2300009800	600x900
2300009810	600x1000
2300009820	600x1100
2300009830	600x1200
2300009840	600x1300
2300009850	600x1400
2300009860	600x1500
2300009870	600x1600
2300009880	600x1700
2300009890	600x1800
2300009900	600x1900
2300009910	600x2000

Elementi H. 1800



Elemento componibile diritto liscio

MODELLO	DIMENSIONI
2300009920	400x600
2300009930	400x700
2300009940	400x800
2300009950	400x900
2300009960	400x1000
2300009970	400x1100
2300009980	400x1200
2300009990	400x1300
2300010000	400x1400
2300010010	400x1500
2300010020	400x1600
2300010030	400x1700
2300010040	400x1800
2300010050	400x1900
2300010060	400x2000
2300010070	500x600
2300010080	500x700
2300010090	500x800
2300010100	500x900
2300010110	500x1000
2300010120	500x1100
2300010130	500x1200
2300010140	500x1300
2300010150	500x1400
2300010160	500x1500
2300010170	500x1600
2300010180	500x1700
2300010190	500x1800
2300010200	500x1900
2300010210	500x2000
2300010220	600x600
2300010230	600x700
2300010240	600x800
2300010250	600x900
2300010260	600x1000
2300010270	600x1100
2300010280	600x1200
2300010290	600x1300
2300010300	600x1400
2300010310	600x1500
2300010320	600x1600
2300010330	600x1700
2300010340	600x1800
2300010350	600x1900
2300010360	600x2000

Elementi H. 1800



Elemento comp. angolo dx liscio

MODELLO	DIMENSIONI
2300010370	400x600
2300010380	400x700
2300010390	400x800
2300010400	400x900
2300010410	400x1000
2300010420	400x1100
2300010430	400x1200
2300010440	400x1300
2300010450	400x1400
2300010460	400x1500
2300010470	400x1600
2300010480	400x1700
2300010490	400x1800
2300010500	400x1900
2300010510	400x2000
2300010520	500x600
2300010530	500x700
2300010540	500x800
2300010550	500x900
2300010560	500x1000
2300010570	500x1100
2300010580	500x1200
2300010590	500x1300
2300010600	500x1400
2300010610	500x1500
2300010620	500x1600
2300010630	500x1700
2300010640	500x1800
2300010650	500x1900
2300010660	500x2000
2300010670	600x600
2300010680	600x700
2300010690	600x800
2300010700	600x900
2300010710	600x1000
2300010720	600x1100
2300010730	600x1200
2300010740	600x1300
2300010750	600x1400
2300010760	600x1500
2300010770	600x1600
2300010780	600x1700
2300010790	600x1800
2300010800	600x1900
2300010810	600x2000

Elementi H. 1800



Elemento comp. angolo sx liscio

MODELLO	DIMENSIONI
2300010820	400x600
2300010830	400x700
2300010840	400x800
2300010850	400x900
2300010860	400x1000
2300010870	400x1100
2300010880	400x1200
2300010890	400x1300
2300010900	400x1400
2300010910	400x1500
2300010920	400x1600
2300010930	400x1700
2300010940	400x1800
2300010950	400x1900
2300010960	400x2000
2300010970	500x600
2300010980	500x700
2300010990	500x800
2300011000	500x900
2300011010	500x1000
2300011020	500x1100
2300011030	500x1200
2300011040	500x1300
2300011050	500x1400
2300011060	500x1500
2300011070	500x1600
2300011080	500x1700
2300011090	500x1800
2300011100	500x1900
2300011110	500x2000
2300011120	600x600
2300011130	600x700
2300011140	600x800
2300011150	600x900
2300011160	600x1000
2300011170	600x1100
2300011180	600x1200
2300011190	600x1300
2300011200	600x1400
2300011210	600x1500
2300011220	600x1600
2300011230	600x1700
2300011240	600x1800
2300011250	600x1900
2300011260	600x2000

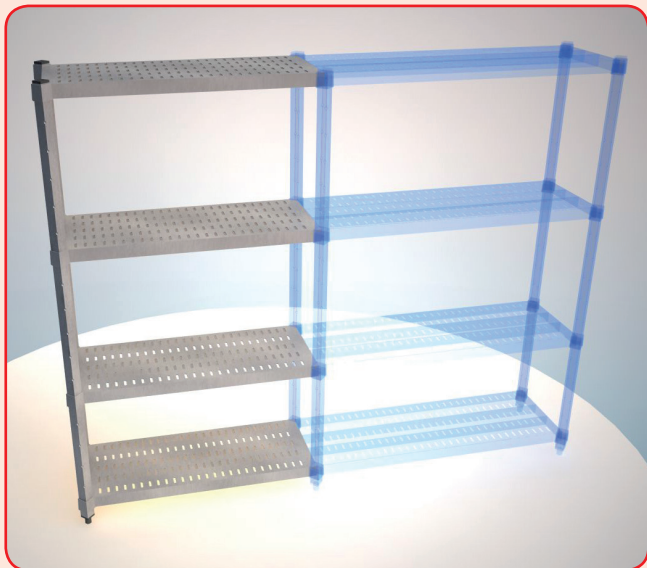
Elementi H. 1800



Elemento base forato

MODELLO	DIMENSIONI
2300011270	400x600
2300011280	400x700
2300011290	400x800
2300011300	400x900
2300011310	400x1000
2300011320	400x1100
2300011330	400x1200
2300011340	400x1300
2300011350	400x1400
2300011360	400x1500
2300011370	400x1600
2300011380	400x1700
2300011390	400x1800
2300011400	400x1900
2300011410	400x2000
2300011420	500x600
2300011430	500x700
2300011440	500x800
2300011450	500x900
2300011460	500x1000
2300011470	500x1100
2300011480	500x1200
2300011490	500x1300
2300011500	500x1400
2300011510	500x1500
2300011520	500x1600
2300011530	500x1700
2300011540	500x1800
2300011550	500x1900
2300011560	500x2000
2300011570	600x600
2300011580	600x700
2300011590	600x800
2300011600	600x900
2300011610	600x1000
2300011620	600x1100
2300011630	600x1200
2300011640	600x1300
2300011650	600x1400
2300011660	600x1500
2300011670	600x1600
2300011680	600x1700
2300011690	600x1800
2300011700	600x1900
2300011710	600x2000

Elementi H. 1800



Elemento componibile diritto forato

MODELLO	DIMENSIONI
2300011720	400x600
2300011730	400x700
2300011740	400x800
2300011750	400x900
2300011760	400x1000
2300011770	400x1100
2300011780	400x1200
2300011790	400x1300
2300011800	400x1400
2300011810	400x1500
2300011820	400x1600
2300011830	400x1700
2300011840	400x1800
2300011850	400x1900
2300011860	400x2000
2300011870	500x600
2300011880	500x700
2300011890	500x800
2300011900	500x900
2300011910	500x1000
2300011920	500x1100
2300011930	500x1200
2300011940	500x1300
2300011950	500x1400
2300011960	500x1500
2300011970	500x1600
2300011980	500x1700
2300011990	500x1800
2300012000	500x1900
2300012010	500x2000
2300012020	600x600
2300012030	600x700
2300012040	600x800
2300012050	600x900
2300012060	600x1000
2300012070	600x1100
2300012080	600x1200
2300012090	600x1300
2300012100	600x1400
2300012110	600x1500
2300012120	600x1600
2300012130	600x1700
2300012140	600x1800
2300012150	600x1900
2300012160	600x2000

Elementi H. 1800



Elemento comp. angolo dx forato

MODELLO	DIMENSIONI
2300012170	400x600
2300012180	400x700
2300012190	400x800
2300012200	400x900
2300012210	400x1000
2300012220	400x1100
2300012230	400x1200
2300012240	400x1300
2300012250	400x1400
2300012260	400x1500
2300012270	400x1600
2300012280	400x1700
2300012290	400x1800
2300012300	400x1900
2300012310	400x2000
2300012320	500x600
2300012330	500x700
2300012340	500x800
2300012350	500x900
2300012360	500x1000
2300012370	500x1100
2300012380	500x1200
2300012390	500x1300
2300012400	500x1400
2300012410	500x1500
2300012420	500x1600
2300012430	500x1700
2300012440	500x1800
2300012450	500x1900
2300012460	500x2000
2300012470	600x600
2300012480	600x700
2300012490	600x800
2300012500	600x900
2300012510	600x1000
2300012520	600x1100
2300012530	600x1200
2300012540	600x1300
2300012550	600x1400
2300012560	600x1500
2300012570	600x1600
2300012580	600x1700
2300012590	600x1800
2300012600	600x1900
2300012610	600x2000

Elementi H. 1800



Elemento comp. angolo sx forato

MODELLO	DIMENSIONI
2300012620	400x600
2300012630	400x700
2300012640	400x800
2300012650	400x900
2300012660	400x1000
2300012670	400x1100
2300012680	400x1200
2300012690	400x1300
2300012700	400x1400
2300012710	400x1500
2300012720	400x1600
2300012730	400x1700
2300012740	400x1800
2300012750	400x1900
2300012760	400x2000
2300012770	500x600
2300012780	500x700
2300012790	500x800
2300012800	500x900
2300012810	500x1000
2300012820	500x1100
2300012830	500x1200
2300012840	500x1300
2300012850	500x1400
2300012860	500x1500
2300012870	500x1600
2300012880	500x1700
2300012890	500x1800
2300012900	500x1900
2300012910	500x2000
2300012920	600x600
2300012930	600x700
2300012940	600x800
2300012950	600x900
2300012960	600x1000
2300012970	600x1100
2300012980	600x1200
2300012990	600x1300
2300013000	600x1400
2300013010	600x1500
2300013020	600x1600
2300013030	600x1700
2300013040	600x1800
2300013050	600x1900
2300013060	600x2000

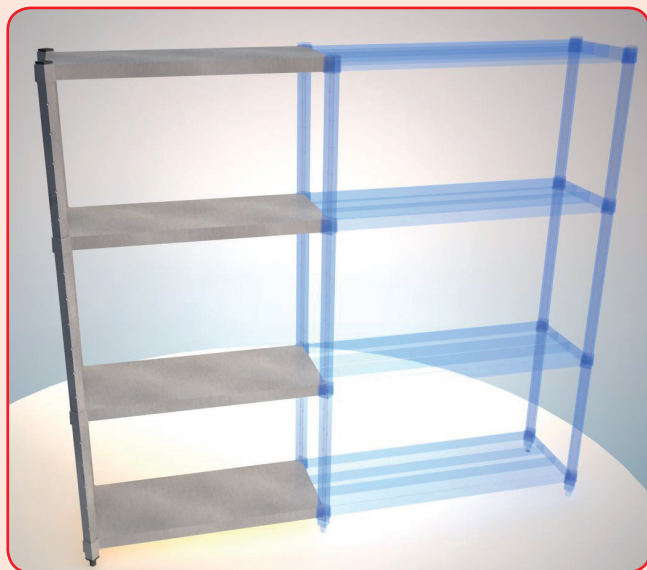
Elementi H. 2000



Elemento base liscio

MODELLO	DIMENSIONI
2300013070	400x600
2300013080	400x700
2300013090	400x800
2300013100	400x900
2300013110	400x1000
2300013120	400x1100
2300013130	400x1200
2300013140	400x1300
2300013150	400x1400
2300013160	400x1500
2300013170	400x1600
2300013180	400x1700
2300013190	400x1800
2300013200	400x1900
2300013210	400x2000
2300013220	500x600
2300013230	500x700
2300013240	500x800
2300013250	500x900
2300013260	500x1000
2300013270	500x1100
2300013280	500x1200
2300013290	500x1300
2300013300	500x1400
2300013310	500x1500
2300013320	500x1600
2300013330	500x1700
2300013340	500x1800
2300013350	500x1900
2300013360	500x2000
2300013370	600x600
2300013380	600x700
2300013390	600x800
2300013400	600x900
2300013410	600x1000
2300013420	600x1100
2300013430	600x1200
2300013440	600x1300
2300013450	600x1400
2300013460	600x1500
2300013470	600x1600
2300013480	600x1700
2300013490	600x1800
2300013500	600x1900
2300013510	600x2000

Elementi H. 2000



Elemento componibile diritto liscio

MODELLO	DIMENSIONI
2300013520	400x600
2300013530	400x700
2300013540	400x800
2300013550	400x900
2300013560	400x1000
2300013570	400x1100
2300013580	400x1200
2300013590	400x1300
2300013600	400x1400
2300013610	400x1500
2300013620	400x1600
2300013630	400x1700
2300013640	400x1800
2300013650	400x1900
2300013660	400x2000
2300013670	500x600
2300013680	500x700
2300013690	500x800
2300013700	500x900
2300013710	500x1000
2300013720	500x1100
2300013730	500x1200
2300013740	500x1300
2300013750	500x1400
2300013760	500x1500
2300013770	500x1600
2300013780	500x1700
2300013790	500x1800
2300013800	500x1900
2300013810	500x2000
2300013820	600x600
2300013830	600x700
2300013840	600x800
2300013850	600x900
2300013860	600x1000
2300013870	600x1100
2300013880	600x1200
2300013890	600x1300
2300013900	600x1400
2300013910	600x1500
2300013920	600x1600
2300013930	600x1700
2300013940	600x1800
2300013950	600x1900
2300013960	600x2000

Elementi H. 2000



Elemento comp. angolo dx liscio

MODELLO	DIMENSIONI
2300013970	400x600
2300013980	400x700
2300013990	400x800
2300014000	400x900
2300014010	400x1000
2300014020	400x1100
2300014030	400x1200
2300014040	400x1300
2300014050	400x1400
2300014060	400x1500
2300014070	400x1600
2300014080	400x1700
2300014090	400x1800
2300014100	400x1900
2300014110	400x2000
2300014120	500x600
2300014130	500x700
2300014140	500x800
2300014150	500x900
2300014160	500x1000
2300014170	500x1100
2300014180	500x1200
2300014190	500x1300
2300014200	500x1400
2300014210	500x1500
2300014220	500x1600
2300014230	500x1700
2300014240	500x1800
2300014250	500x1900
2300014260	500x2000
2300014270	600x600
2300014280	600x700
2300014290	600x800
2300014300	600x900
2300014310	600x1000
2300014320	600x1100
2300014330	600x1200
2300014340	600x1300
2300014350	600x1400
2300014360	600x1500
2300014370	600x1600
2300014380	600x1700
2300014390	600x1800
2300014400	600x1900
2300014410	600x2000

Elementi H. 2000



Elemento comp. angolo sx liscio

MODELLO	DIMENSIONI
2300014420	400x600
2300014430	400x700
2300014440	400x800
2300014450	400x900
2300014460	400x1000
2300014470	400x1100
2300014480	400x1200
2300014490	400x1300
2300014500	400x1400
2300014510	400x1500
2300014520	400x1600
2300014530	400x1700
2300014540	400x1800
2300014550	400x1900
2300014560	400x2000
2300014570	500x600
2300014580	500x700
2300014590	500x800
2300014600	500x900
2300014610	500x1000
2300014620	500x1100
2300014630	500x1200
2300014640	500x1300
2300014650	500x1400
2300014660	500x1500
2300014670	500x1600
2300014680	500x1700
2300014690	500x1800
2300014700	500x1900
2300014710	500x2000
2300014720	600x600
2300014730	600x700
2300014740	600x800
2300014750	600x900
2300014760	600x1000
2300014770	600x1100
2300014780	600x1200
2300014790	600x1300
2300014800	600x1400
2300014810	600x1500
2300014820	600x1600
2300014830	600x1700
2300014840	600x1800
2300014850	600x1900
2300014860	600x2000

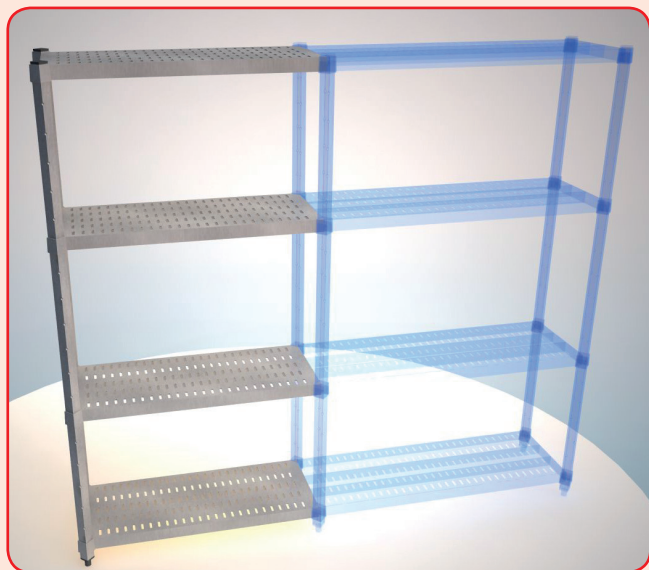
Elementi H. 2000



Elemento base forato

MODELLO	DIMENSIONI
2300014870	400x600
2300014880	400x700
2300014890	400x800
2300014900	400x900
2300014910	400x1000
2300014920	400x1100
2300014930	400x1200
2300014940	400x1300
2300014950	400x1400
2300014960	400x1500
2300014970	400x1600
2300014980	400x1700
2300014990	400x1800
2300015000	400x1900
2300015010	400x2000
2300015020	500x600
2300015030	500x700
2300015040	500x800
2300015050	500x900
2300015060	500x1000
2300015070	500x1100
2300015080	500x1200
2300015090	500x1300
2300015100	500x1400
2300015110	500x1500
2300015120	500x1600
2300015130	500x1700
2300015140	500x1800
2300015150	500x1900
2300015160	500x2000
2300015170	600x600
2300015180	600x700
2300015190	600x800
2300015200	600x900
2300015210	600x1000
2300015220	600x1100
2300015230	600x1200
2300015240	600x1300
2300015250	600x1400
2300015260	600x1500
2300015270	600x1600
2300015280	600x1700
2300015290	600x1800
2300015300	600x1900
2300015310	600x2000

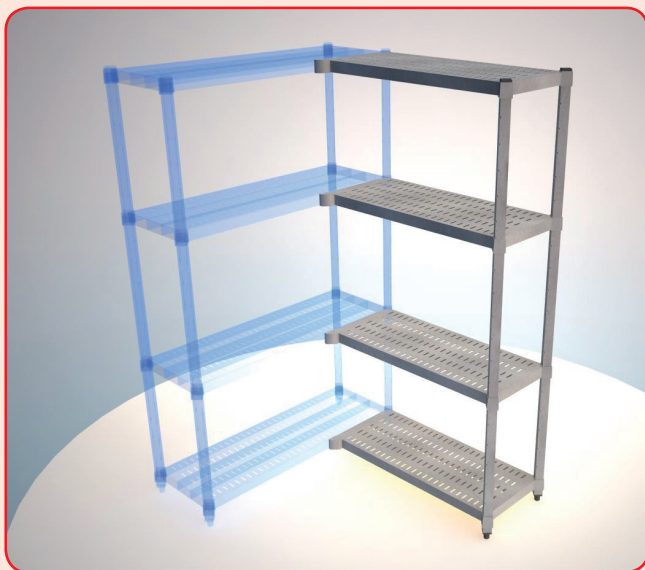
Elementi H. 2000



Elemento componibile diritto forato

MODELLO	DIMENSIONI
2300015320	400x600
2300015330	400x700
2300015340	400x800
2300015350	400x900
2300015360	400x1000
2300015370	400x1100
2300015380	400x1200
2300015390	400x1300
2300015400	400x1400
2300015410	400x1500
2300015420	400x1600
2300015430	400x1700
2300015440	400x1800
2300015450	400x1900
2300015460	400x2000
2300015470	500x600
2300015480	500x700
2300015490	500x800
2300015500	500x900
2300015510	500x1000
2300015520	500x1100
2300015530	500x1200
2300015540	500x1300
2300015550	500x1400
2300015560	500x1500
2300015570	500x1600
2300015580	500x1700
2300015590	500x1800
2300015600	500x1900
2300015610	500x2000
2300015620	600x600
2300015630	600x700
2300015640	600x800
2300015650	600x900
2300015660	600x1000
2300015670	600x1100
2300015680	600x1200
2300015690	600x1300
2300015700	600x1400
2300015710	600x1500
2300015720	600x1600
2300015730	600x1700
2300015740	600x1800
2300015750	600x1900
2300015760	600x2000

Elementi H. 2000



Elemento comp. angolo dx forato

MODELLO	DIMENSIONI
2300015770	400x600
2300015780	400x700
2300015790	400x800
2300015800	400x900
2300015810	400x1000
2300015820	400x1100
2300015830	400x1200
2300015840	400x1300
2300015850	400x1400
2300015860	400x1500
2300015870	400x1600
2300015880	400x1700
2300015890	400x1800
2300015900	400x1900
2300015910	400x2000
2300015920	500x600
2300015930	500x700
2300015940	500x800
2300015950	500x900
2300015960	500x1000
2300015970	500x1100
2300015980	500x1200
2300015990	500x1300
2300016000	500x1400
2300016010	500x1500
2300016020	500x1600
2300016030	500x1700
2300016040	500x1800
2300016050	500x1900
2300016060	500x2000
2300016070	600x600
2300016080	600x700
2300016090	600x800
2300016100	600x900
2300016110	600x1000
2300016120	600x1100
2300016130	600x1200
2300016140	600x1300
2300016150	600x1400
2300016160	600x1500
2300016170	600x1600
2300016180	600x1700
2300016190	600x1800
2300016200	600x1900
2300016210	600x2000

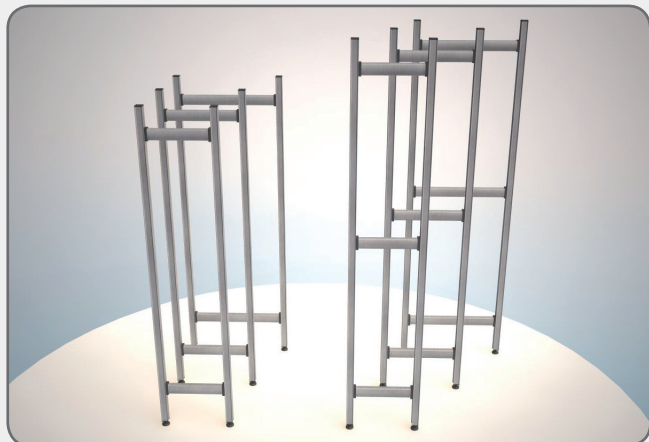
Elementi H. 2000



Elemento comp. angolo sx forato

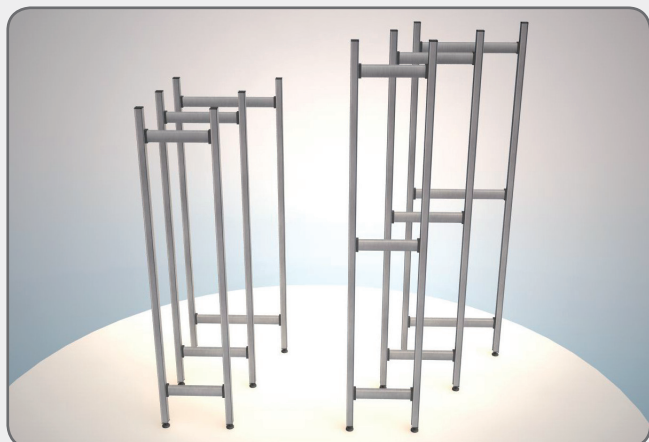
MODELLO	DIMENSIONI
2300016220	400x600
2300016230	400x700
2300016240	400x800
2300016250	400x900
2300016260	400x1000
2300016270	400x1100
2300016280	400x1200
2300016290	400x1300
2300016300	400x1400
2300016310	400x1500
2300016320	400x1600
2300016330	400x1700
2300016340	400x1800
2300016350	400x1900
2300016360	400x2000
2300016370	500x600
2300016380	500x700
2300016390	500x800
2300016400	500x900
2300016410	500x1000
2300016420	500x1100
2300016430	500x1200
2300016440	500x1300
2300016450	500x1400
2300016460	500x1500
2300016470	500x1600
2300016480	500x1700
2300016490	500x1800
2300016500	500x1900
2300016510	500x2000
2300016520	600x600
2300016530	600x700
2300016540	600x800
2300016550	600x900
2300016560	600x1000
2300016570	600x1100
2300016580	600x1200
2300016590	600x1300
2300016600	600x1400
2300016610	600x1500
2300016620	600x1600
2300016630	600x1700
2300016640	600x1800
2300016650	600x1900
2300016660	600x2000

Componenti standard



Spalla terminale
completa di basi regolabili e tappi

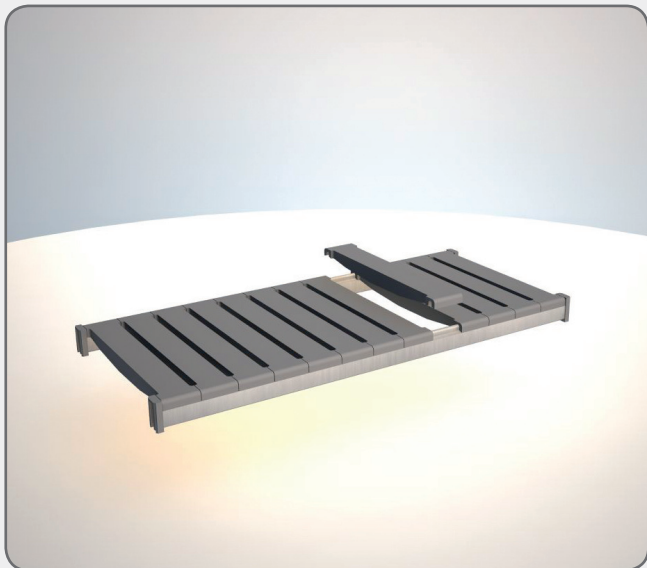
MODELLO	DIMENSIONI
2400000010	375x1700 H
2400000020	375x2000 H
2400000030	450x1700 H
2400000040	450x2000 H
2400000050	600x1700 H
2400000060	600x2000 H



Spalla centrale
completa di basi regolabili e tappi

MODELLO	DIMENSIONI
2400000070	375x1700 H
2400000080	375x2000 H
2400000090	450x1700 H
2400000100	450x2000 H
2400000110	600x1700 H
2400000120	600x2000 H

Componenti standard



Completo di 4 tasselli d'aggancio alle spalle

Ripiano in alluminio con doghe in plastica

MODELLO	DIMENSIONI
2400000130	375x400 L
2400000140	375x475 L
2400000150	375x550 L
2400000160	375x625 L
2400000170	375x700 L
2400000180	375x775 L
2400000190	375x850 L
2400000200	375x925 L
2400000210	375x1000 L
2400000220	375x1075 L
2400000230	375x1150 L
2400000240	375x1225 L
2400000250	375x1300 L
2400000260	375x1375 L
2400000270	375x1450 L
2400000280	375x1525 L
2400000290	375x1600 L
2400000300	375x1675 L
2400000310	375x1750 L
2400000320	375x1825 L
2400000330	375x1900 L
2400000340	375x1975 L
<hr/>	
2400000350	450x400 L
2400000360	450x475 L
2400000370	450x550 L
2400000380	450x625 L
2400000390	450x700 L
2400000400	450x775 L
2400000410	450x850 L
2400000420	450x925 L
2400000430	450x1000 L
2400000440	450x1075 L
2400000450	450x1150 L
2400000460	450x1225 L
2400000470	450x1300 L
2400000480	450x1375 L
2400000490	450x1450 L
2400000500	450x1525 L
2400000510	450x1600 L
2400000520	450x1675 L
2400000530	450x1750 L
2400000540	450x1825 L
2400000550	450x1900 L
2400000560	450x1975 L

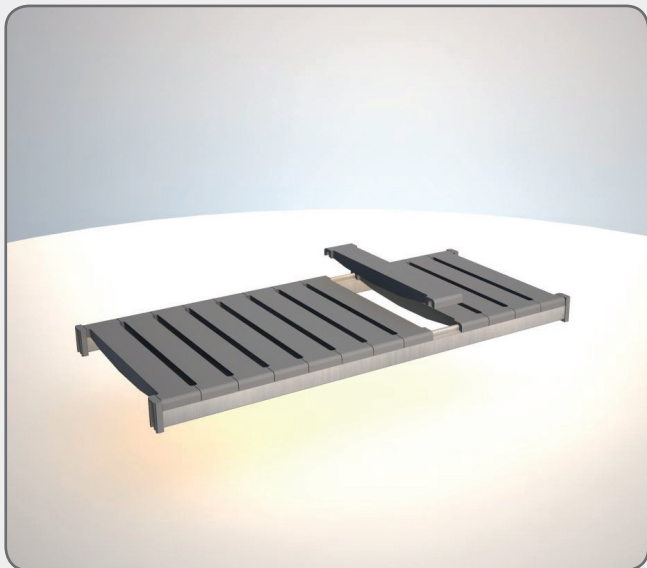
continua

CONDIZIONI DI CARICO DEI RIPIANI

DATI COMUNI A TUTTE LE PROFONDITÀ (D = 375; 450; 600)

Lunghezza mm	Portata in Kg		N° di elementi da 75 mm
	Lineare	Angolare	
400	250	180	5
475	250	180	6
550	250	180	7
625	250	180	8
700	250	180	9
775	250	180	10
850	250	180	11
925	240	170	12
1000	240	170	13
1075	220	150	14
1225	220	150	15
1300	200	140	17
1375	200	140	18
1450	200	140	19
1525	180	125	20
1600	180	125	21
1675	180	125	22
1750	150	100	23
1825	150	100	24
1900	120	85	25
1975	110	75	26

Componenti standard

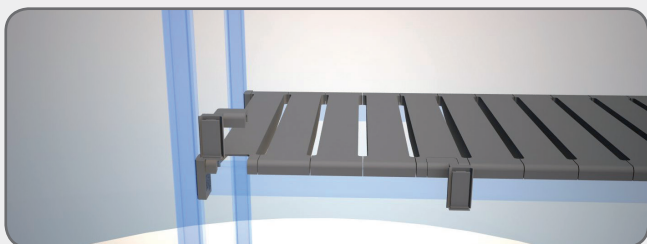


Completo di 4 tasselli d'aggancio alle spalle

Ripiano in alluminio con doghe in plastica

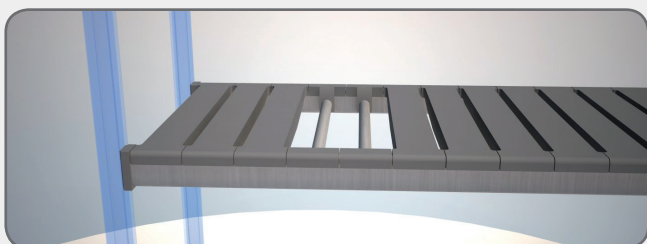
MODELLO	DIMENSIONI
2400000570	600x400 L
2400000580	600x475 L
2400000590	600x550 L
2400000600	600x625 L
2400000610	600x700 L
2400000620	600x775 L
2400000630	600x850 L
2400000640	600x925 L
2400000650	600x1000 L
2400000660	600x1075 L
2400000670	600x1150 L
2400000680	600x1225 L
2400000690	600x1300 L
2400000700	600x1375 L
2400000710	600x1450 L
2400000720	600x1525 L
2400000730	600x1600 L
2400000740	600x1675 L
2400000750	600x1750 L
2400000760	600x1825 L
2400000770	600x1900 L
2400000780	600x1975 L

Optional



Giunto ad angolo

MODELLO	DIMENSIONI
2400000790	prof. 375
2400000800	prof. 450
2400000810	prof. 600



Doga per appenderia

MODELLO	DIMENSIONI
2400000820	prof. 375
2400000830	prof. 450
2400000840	prof. 600

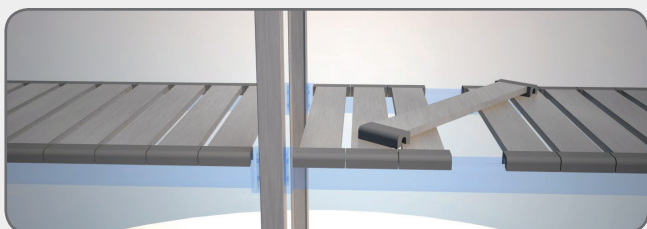
Intercambiabile sia con pianetto in plastica che in alluminio

Optional



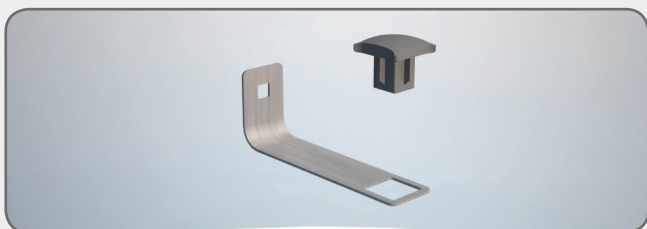
Gancio piccolo in termoplastica

MODELLO	PORTATA
2400000850	50 kg



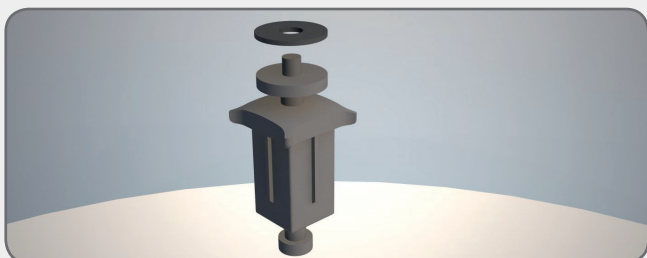
Doga in alluminio

MODELLO	DIMENSIONI
2400000860	



Staffa fissaggio spalla a parete

MODELLO	DIMENSIONI
2400000870	



Base regolabile con perno
fissaggio a pavimento o soffitto

MODELLO	DIMENSIONI
2400000880	

Completa di guarnizione in gomma



Staffa accoppiamento spalle

MODELLO	DIMENSIONI
2400000890	

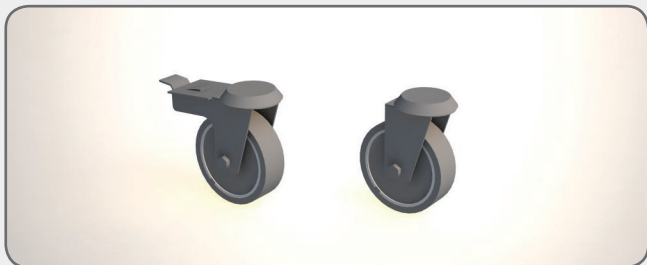
Accoppiate nel senso della profondità

Optional



Ruota girevole ø 100 mm
in materiale plastico

MODELLO	PORTATA
2400000900	50 kg



Ruota girevole ø 100 mm con freno
in materiale plastico

MODELLO	PORTATA
2400000910	50 kg

Elementi H. 1700



Elemento lineare - 2 spalle



Elemento lineare - 3 spalle

			MODELLO cod: 24000xxxx								
PROFONDITÀ RIPIANO			P = 375 mm			P = 450 mm			P = 600 mm		
	Lunghezza	Composizione scaffale	3 rip.	4 rip.	5 rip.	3 rip.	4 rip.	5 rip.	3 rip.	4 rip.	5 rip.
N° 2 SPALLE	770	1x700	920	1100	1280	1460	1640	1820	2000	2180	2360
	845	1x775	930	1110	1290	1470	1650	1830	2010	2190	2370
	920	1x850	940	1120	1300	1480	1660	1840	2020	2200	2380
	995	1x925	950	1130	1310	1490	1670	1850	2030	2210	2390
	1070	1x1000	960	1140	1320	1500	1680	1860	2040	2220	2400
	1145	1x1075	970	1150	1330	1510	1690	1870	2050	2230	2410
	1220	1x1150	980	1160	1340	1520	1700	1880	2060	2240	2420
	1295	1x1225	990	1170	1350	1530	1710	1890	2070	2250	2430
	1370	1x1300	1000	1180	1360	1540	1720	1900	2080	2260	2440
	1445	1x1375	1010	1190	1370	1550	1730	1910	2090	2270	2450
	1520	1x1450	1020	1200	1380	1560	1740	1920	2100	2280	2460
	1595	1x1525	1030	1210	1390	1570	1750	1930	2110	2290	2470
	1670	1x1600	1040	1220	1400	1580	1760	1940	2120	2300	2480
	1745	1x1675	1050	1230	1410	1590	1770	1950	2130	2310	2490
	1820	1x1750	1060	1240	1420	1600	1780	1960	2140	2320	2500
	1895	1x1825	1070	1250	1430	1610	1790	1970	2150	2330	2510
	1970	1x1900	1080	1260	1440	1620	1800	1980	2160	2340	2520
	2045	1x1975	1090	1270	1450	1630	1810	1990	2170	2350	2530
N° 3 SPALLE	2105	2x1000	2540	2810	3080	3350	3620	3890	4160	4430	4700
	2180	(1x1000)+(1x1075)	2550	2820	3090	3360	3630	3900	4170	4440	4710
	2255	2x1075	2560	2830	3100	3370	3640	3910	4180	4450	4720
	2330	(1x1075)+(1x1150)	2570	2840	3110	3380	3650	3920	4190	4460	4730
	2405	2x1150	2580	2850	3120	3390	3660	3930	4200	4470	4740
	2480	(1x1150)+(1x1225)	2590	2860	3130	3400	3670	3940	4210	4480	4750
	2555	2x1225	2600	2870	3140	3410	3680	3950	4220	4490	4760
	2630	(1x1225)+(1x1300)	2610	2880	3150	3420	3690	3960	4230	4500	4770
	2705	1x1300	2620	2890	3160	3430	3700	3970	4240	4510	4780
	2780	(1x1300)+(1x1375)	2630	2900	3170	3440	3710	3980	4250	4520	4790
	2855	2x1375	2640	2910	3180	3450	3720	3990	4260	4530	4800
	2930	(1x1375)+(1x1450)	2650	2920	3190	3460	3730	4000	4270	4540	4810
	3005	2x1450	2660	2930	3200	3470	3740	4010	4280	4550	4820
	3080	(1x1450)+(1x1525)	2670	2940	3210	3480	3750	4020	4290	4560	4830
	3155	2x1525	2680	2950	3220	3490	3760	4030	4300	4570	4840
	3230	(1x1525)+(1x1600)	2690	2960	3230	3500	3770	4040	4310	4580	4850
	3305	2x1600	2700	2970	3240	3510	3780	4050	4320	4590	4860
	3380	(1x1600)+(1x1675)	2710	2980	3250	3520	3790	4060	4330	4600	4870
	3455	2x1675	2720	2990	3260	3530	3800	4070	4340	4610	4880
	3530	(1x1675)+(1x1750)	2730	3000	3270	3540	3810	4080	4350	4620	4890
	3605	2x1750	2740	3010	3280	3550	3820	4090	4360	4630	4900
	3680	(1x1750)+(1x1825)	2750	3020	3290	3560	3830	4100	4370	4640	4910
	3755	2x1825	2760	3030	3300	3570	3840	4110	4380	4650	4920
	3830	(1x1825)+(1x1900)	2770	3040	3310	3580	3850	4120	4390	4660	4930
	3905	2x1900	2780	3050	3320	3590	3860	4130	4400	4670	4940
	3980	(1x1900)+(1x1975)	2790	3060	3330	3600	3870	4140	4410	4680	4950
	4055	2x1975	2800	3070	3340	3610	3880	4150	4420	4690	4960

Elementi H. 1700



Elemento angolare - 1 spalla



Elemento angolare - 2 spalle

			MODELLO cod: 24000xxxx								
PROFONDITÀ RIPIANO			P = 375 mm			P = 450 mm			P = 600 mm		
	Lunghezza	Composizione scaffale	3 rip.	4 rip.	5 rip.	3 rip.	4 rip.	5 rip.	3 rip.	4 rip.	5 rip.
N° 1 SPALLA	770	1x700	4970	5150	5330	5510	5690	5870	6050	6230	6410
	845	1x775	4980	5160	5340	5520	5700	5880	6060	6240	6420
	920	1x850	4990	5170	5350	5530	5710	5890	6070	6250	6430
	995	1x925	5000	5180	5360	5540	5720	5900	6080	6260	6440
	1070	1x1000	5010	5190	5370	5550	5730	5910	6090	6270	6450
	1145	1x1075	5020	5200	5380	5560	5740	5920	6100	6280	6460
	1220	1x1150	5030	5210	5390	5570	5750	5930	6110	6290	6470
	1295	1x1225	5040	5220	5400	5580	5760	5940	6120	6300	6480
	1370	1x1300	5050	5230	5410	5590	5770	5950	6130	6310	6490
	1445	1x1375	5060	5240	5420	5600	5780	5960	6140	6320	6500
	1520	1x1450	5070	5250	5430	5610	5790	5970	6150	6330	6510
	1595	1x1525	5080	5260	5440	5620	5800	5980	6160	6340	6520
	1670	1x1600	5090	5270	5450	5630	5810	5990	6170	6350	6530
	1745	1x1675	5100	5280	5460	5640	5820	6000	6180	6360	6540
	1820	1x1750	5110	5290	5470	5650	5830	6010	6190	6370	6550
	1895	1x1825	5120	5300	5480	5660	5840	6020	6200	6380	6560
	1970	1x1900	5130	5310	5490	5670	5850	6030	6210	6390	6570
	2045	1x1975	5140	5320	5500	5680	5860	6040	6220	6400	6580
N° 2 SPALLE	2105	2x1000	6590	6860	7130	7400	7670	7940	8210	8480	8750
	2180	(1x1000)+(1x1075)	6600	6870	7140	7410	7680	7950	8220	8490	8760
	2255	2x1075	6610	6880	7150	7420	7690	7960	8230	8500	8770
	2330	(1x1075)+(1x1150)	6620	6890	7160	7430	7700	7970	8240	8510	8780
	2405	2x1150	6630	6900	7170	7440	7710	7980	8250	8520	8790
	2480	(1x1150)+(1x1225)	6640	6910	7180	7450	7720	7990	8260	8530	8800
	2555	2x1225	6650	6920	7190	7460	7730	8000	8270	8540	8810
	2630	(1x1225)+(1x1300)	6660	6930	7200	7470	7740	8010	8280	8550	8820
	2705	1x1300	6670	6940	7210	7480	7750	8020	8290	8560	8830
	2780	(1x1300)+(1x1375)	6680	6950	7220	7490	7760	8030	8300	8570	8840
	2855	2x1375	6690	6960	7230	7500	7770	8040	8310	8580	8850
	2930	(1x1375)+(1x1450)	6700	6970	7240	7510	7780	8050	8320	8590	8860
	3005	2x1450	6710	6980	7250	7520	7790	8060	8330	8600	8870
	3080	(1x1450)+(1x1525)	6720	6990	7260	7530	7800	8070	8340	8610	8880
	3155	2x1525	6730	7000	7270	7540	7810	8080	8350	8620	8890
	3230	(1x1525)+(1x1600)	6740	7010	7280	7550	7820	8090	8360	8630	8900
	3305	2x1600	6750	7020	7290	7560	7830	8100	8370	8640	8910
	3380	(1x1600)+(1x1675)	6760	7030	7300	7570	7840	8110	8380	8650	8920
	3455	2x1675	6770	7040	7310	7580	7850	8120	8390	8660	8930
	3530	(1x1675)+(1x1750)	6780	7050	7320	7590	7860	8130	8400	8670	8940
	3605	2x1750	6790	7060	7330	7600	7870	8140	8410	8680	8950
	3680	(1x1750)+(1x1825)	6800	7070	7340	7610	7880	8150	8420	8690	8960
	3755	2x1825	6810	7080	7350	7620	7890	8160	8430	8700	8970
	3830	(1x1825)+(1x1900)	6820	7090	7360	7630	7900	8170	8440	8710	8980
	3905	2x1900	6830	7100	7370	7640	7910	8180	8450	8720	8990
	3980	(1x1900)+(1x1975)	6840	7110	7380	7650	7920	8190	8460	8730	9000
	4055	2x1975	6850	7120	7390	7660	7930	8200	8470	8740	9010

Elementi H. 2000



Elemento lineare - 2 spalle



Elemento lineare - 3 spalle

			MODELLO cod: 24000xxxx								
PROFONDITÀ RIPIANO			P = 375 mm			P = 450 mm			P = 600 mm		
	Lunghezza	Composizione scaffale	3 rip.	4 rip.	5 rip.	3 rip.	4 rip.	5 rip.	3 rip.	4 rip.	5 rip.
N° 2 SPALLE	770	1x700	9020	9200	9380	9560	9740	9920	10100	10280	10460
	845	1x775	9030	9210	9390	9570	9750	9930	10110	10290	10470
	920	1x850	9040	9220	9400	9580	9760	9940	10120	10300	10480
	995	1x925	9050	9230	9410	9590	9770	9950	10130	10310	10490
	1070	1x1000	9060	9240	9420	9600	9780	9960	10140	10320	10500
	1145	1x1075	9070	9250	9430	9610	9790	9970	10150	10330	10510
	1220	1x1150	9080	9260	9440	9620	9800	9980	10160	10340	10520
	1295	1x1225	9090	9270	9450	9630	9810	9990	10170	10350	10530
	1370	1x1300	9100	9280	9460	9640	9820	10000	10180	10360	10540
	1445	1x1375	9110	9290	9470	9650	9830	10010	10190	10370	10550
	1520	1x1450	9120	9300	9480	9660	9840	10020	10200	10380	10560
	1595	1x1525	9130	9310	9490	9670	9850	10030	10210	10390	10570
	1670	1x1600	9140	9320	9500	9680	9860	10040	10220	10400	10580
	1745	1x1675	9150	9330	9510	9690	9870	10050	10230	10410	10590
	1820	1x1750	9160	9340	9520	9700	9880	10060	10240	10420	10600
	1895	1x1825	9170	9350	9530	9710	9890	10070	10250	10430	10610
	1970	1x1900	9180	9360	9540	9720	9900	10080	10260	10440	10620
2045	1x1975	9190	9370	9550	9730	9910	10090	10270	10450	10630	
N° 3 SPALLE	2105	2x1000	10640	10910	11180	11450	11720	11990	12260	12530	12800
	2180	(1x1000)+(1x1075)	10650	10920	11190	11460	11730	12000	12270	12540	12810
	2255	2x1075	10660	10930	11200	11470	11740	12010	12280	12550	12820
	2330	(1x1075)+(1x1150)	10670	10940	11210	11480	11750	12020	12290	12560	12830
	2405	2x1150	10680	10950	11220	11490	11760	12030	12300	12570	12840
	2480	(1x1150)+(1x1225)	10690	10960	11230	11500	11770	12040	12310	12580	12850
	2555	2x1225	10700	10970	11240	11510	11780	12050	12320	12590	12860
	2630	(1x1225)+(1x1300)	10710	10980	11250	11520	11790	12060	12330	12600	12870
	2705	1x1300	10720	10990	11260	11530	11800	12070	12340	12610	12880
	2780	(1x1300)+(1x1375)	10730	11000	11270	11540	11810	12080	12350	12620	12890
	2855	2x1375	10740	11010	11280	11550	11820	12090	12360	12630	12900
	2930	(1x1375)+(1x1450)	10750	11020	11290	11560	11830	12100	12370	12640	12910
	3005	2x1450	10760	11030	11300	11570	11840	12110	12380	12650	12920
	3080	(1x1450)+(1x1525)	10770	11040	11310	11580	11850	12120	12390	12660	12930
	3155	2x1525	10780	11050	11320	11590	11860	12130	12400	12670	12940
	3230	(1x1525)+(1x1600)	10790	11060	11330	11600	11870	12140	12410	12680	12950
	3305	2x1600	10800	11070	11340	11610	11880	12150	12420	12690	12960
	3380	(1x1600)+(1x1675)	10810	11080	11350	11620	11890	12160	12430	12700	12970
	3455	2x1675	10820	11090	11360	11630	11900	12170	12440	12710	12980
	3530	(1x1675)+(1x1750)	10830	11100	11370	11640	11910	12180	12450	12720	12990
	3605	2x1750	10840	11110	11380	11650	11920	12190	12460	12730	13000
	3680	(1x1750)+(1x1825)	10850	11120	11390	11660	11930	12200	12470	12740	13010
	3755	2x1825	10860	11130	11400	11670	11940	12210	12480	12750	13020
3830	(1x1825)+(1x1900)	10870	11140	11410	11680	11950	12220	12490	12760	13030	
3905	2x1900	10880	11150	11420	11690	11960	12230	12500	12770	13040	
3980	(1x1900)+(1x1975)	10890	11160	11430	11700	11970	12240	12510	12780	13050	
4055	2x1975	10900	11170	11440	11710	11980	12250	12520	12790	13060	

Elementi H. 2000



Elemento angolare - 1 spalla



Elemento angolare - 2 spalle

			MODELLO cod: 24000xxxx								
PROFONDITÀ RIPIANO			P = 375 mm			P = 450 mm			P = 600 mm		
	Lunghezza	Composizione scaffale	3 rip.	4 rip.	5 rip.	3 rip.	4 rip.	5 rip.	3 rip.	4 rip.	5 rip.
N° 1 SPALLA	770	1x700	13070	13250	13430	13610	13790	13970	14150	14330	14510
	845	1x775	13080	13260	13440	13620	13800	13980	14160	14340	14520
	920	1x850	13090	13270	13450	13630	13810	13990	14170	14350	14530
	995	1x925	13100	13280	13460	13640	13820	14000	14180	14360	14540
	1070	1x1000	13110	13290	13470	13650	13830	14010	14190	14370	14550
	1145	1x1075	13120	13300	13480	13660	13840	14020	14200	14380	14560
	1220	1x1150	13130	13310	13490	13670	13850	14030	14210	14390	14570
	1295	1x1225	13140	13320	13500	13680	13860	14040	14220	14400	14580
	1370	1x1300	13150	13330	13510	13690	13870	14050	14230	14410	14590
	1445	1x1375	13160	13340	13520	13700	13880	14060	14240	14420	14600
	1520	1x1450	13170	13350	13530	13710	13890	14070	14250	14430	14610
	1595	1x1525	13180	13360	13540	13720	13900	14080	14260	14440	14620
	1670	1x1600	13190	13370	13550	13730	13910	14090	14270	14450	14630
	1745	1x1675	13200	13380	13560	13740	13920	14100	14280	14460	14640
	1820	1x1750	13210	13390	13570	13750	13930	14110	14290	14470	14650
	1895	1x1825	13220	13400	13580	13760	13940	14120	14300	14480	14660
	1970	1x1900	13230	13410	13590	13770	13950	14130	14310	14490	14670
	2045	1x1975	13240	13420	13600	13780	13960	14140	14320	14500	14680
N° 2 SPALLE	2105	2x1000	14690	14960	15230	15500	15770	16040	16310	16580	16850
	2180	(1x1000)+(1x1075)	14700	14970	15240	15510	15780	16050	16320	16590	16860
	2255	2x1075	14710	14980	15250	15520	15790	16060	16330	16600	16870
	2330	(1x1075)+(1x1150)	14720	14990	15260	15530	15800	16070	16340	16610	16880
	2405	2x1150	14730	15000	15270	15540	15810	16080	16350	16620	16890
	2480	(1x1150)+(1x1225)	14740	15010	15280	15550	15820	16090	16360	16630	16900
	2555	2x1225	14750	15020	15290	15560	15830	16100	16370	16640	16910
	2630	(1x1225)+(1x1300)	14760	15030	15300	15570	15840	16110	16380	16650	16920
	2705	1x1300	14770	15040	15310	15580	15850	16120	16390	16660	16930
	2780	(1x1300)+(1x1375)	14780	15050	15320	15590	15860	16130	16400	16670	16940
	2855	2x1375	14790	15060	15330	15600	15870	16140	16410	16680	16950
	2930	(1x1375)+(1x1450)	14800	15070	15340	15610	15880	16150	16420	16690	16960
	3005	2x1450	14810	15080	15350	15620	15890	16160	16430	16700	16970
	3080	(1x1450)+(1x1525)	14820	15090	15360	15630	15900	16170	16440	16710	16980
	3155	2x1525	14830	15100	15370	15640	15910	16180	16450	16720	16990
	3230	(1x1525)+(1x1600)	14840	15110	15380	15650	15920	16190	16460	16730	17000
	3305	2x1600	14850	15120	15390	15660	15930	16200	16470	16740	17010
	3380	(1x1600)+(1x1675)	14860	15130	15400	15670	15940	16210	16480	16750	17020
	3455	2x1675	14870	15140	15410	15680	15950	16220	16490	16760	17030
	3530	(1x1675)+(1x1750)	14880	15150	15420	15690	15960	16230	16500	16770	17040
	3605	2x1750	14890	15160	15430	15700	15970	16240	16510	16780	17050
	3680	(1x1750)+(1x1825)	14900	15170	15440	15710	15980	16250	16520	16790	17060
	3755	2x1825	14910	15180	15450	15720	15990	16260	16530	16800	17070
	3830	(1x1825)+(1x1900)	14920	15190	15460	15730	16000	16270	16540	16810	17080
	3905	2x1900	14930	15200	15470	15740	16010	16280	16550	16820	17090
	3980	(1x1900)+(1x1975)	14940	15210	15480	15750	16020	16290	16560	16830	17100
	4055	2x1975	14950	15220	15490	15760	16030	16300	16570	16840	17110





Via Della Resistenza, 8/4 - 41011 Campogalliano - MO

Tel. 059 527602 - Fax 059 527583
E-mail: balboni@balboni-inox.com
www.balboni-inox.com